

Chapter 9

CHASSIS DRAWINGS

1. CAB DRAWINGS
2. CAB BACK DRAWINGS
3. CHASSIS DRAWINGS
4. CHASSIS FRAME DRAWINGS
5. DRILLING HOLES ON THE SIDE RAIL (AROUND REAR SUSPENSION)

ABOUT CAD-DATA

CAD-DATA is contained on separate attachment file in this CD-ROM.

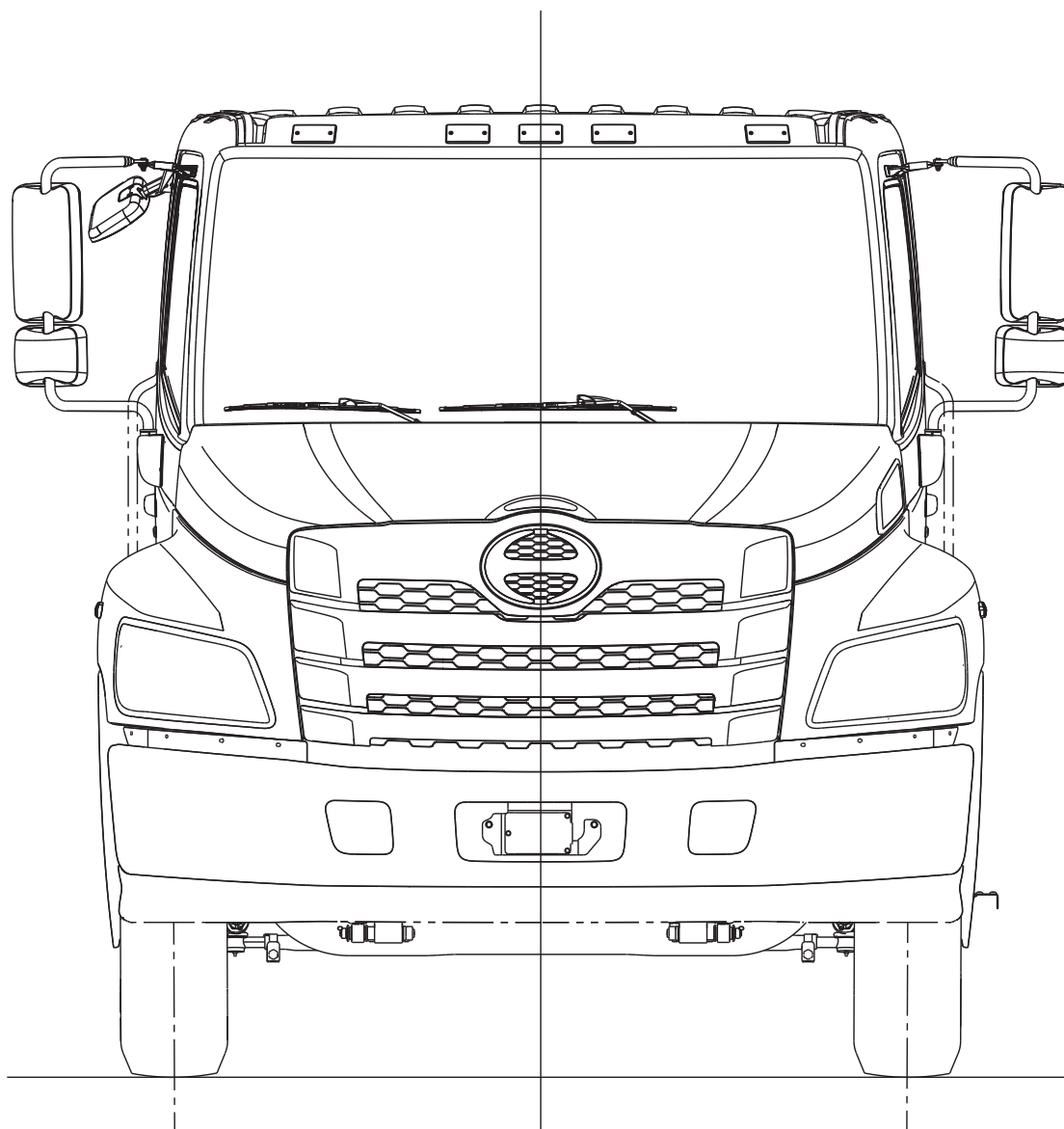
CONTENTS ;

- CAB DRAWING
- CAB BACK DRAWING
- CHASSIS DRAWING

1. CAB DRAWINGS

MODEL : NEC1 AND NFC1

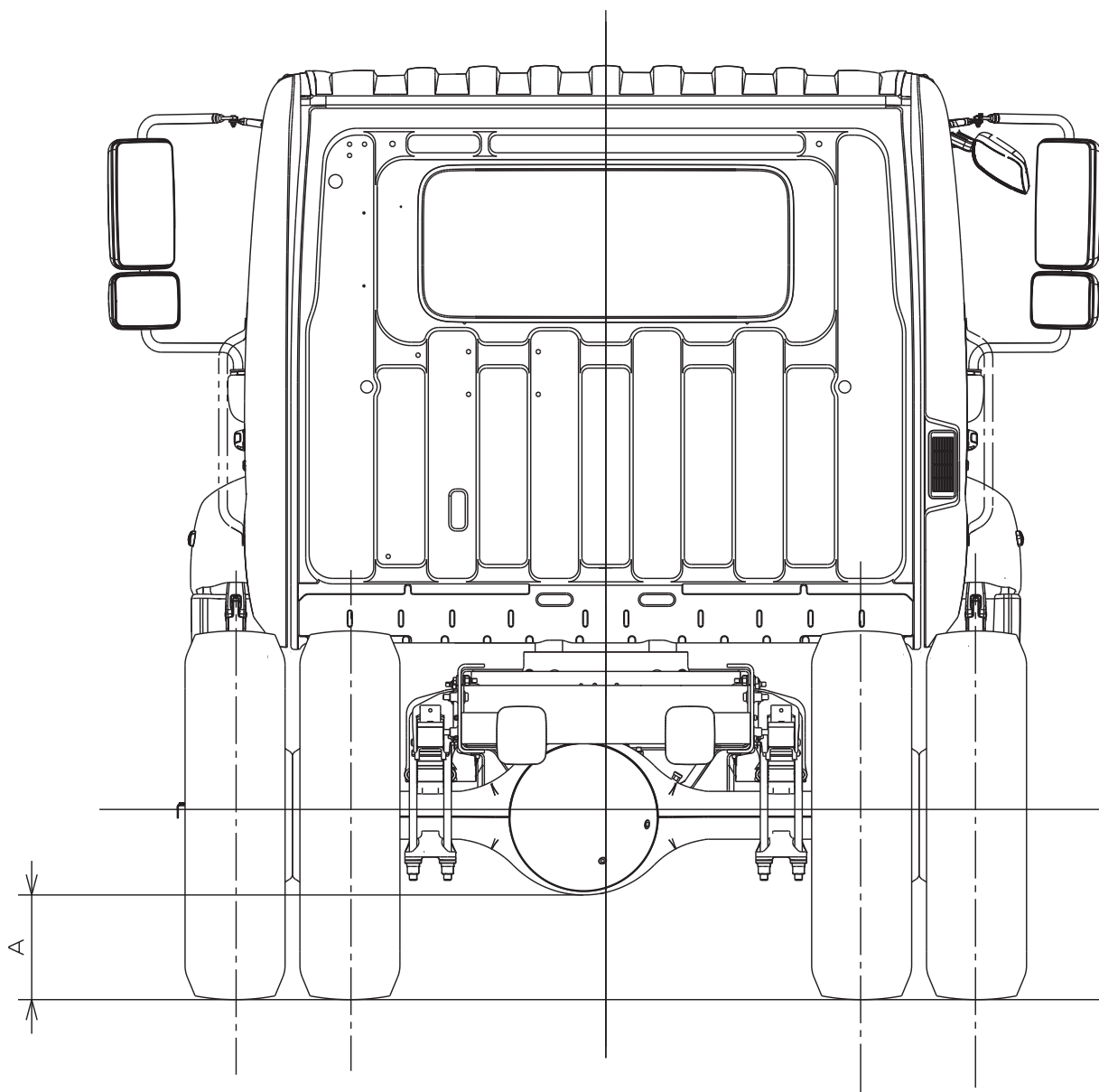
• FRONT SIDE VIEW



• REAR SIDE VIEW

Unit : mm (in.)

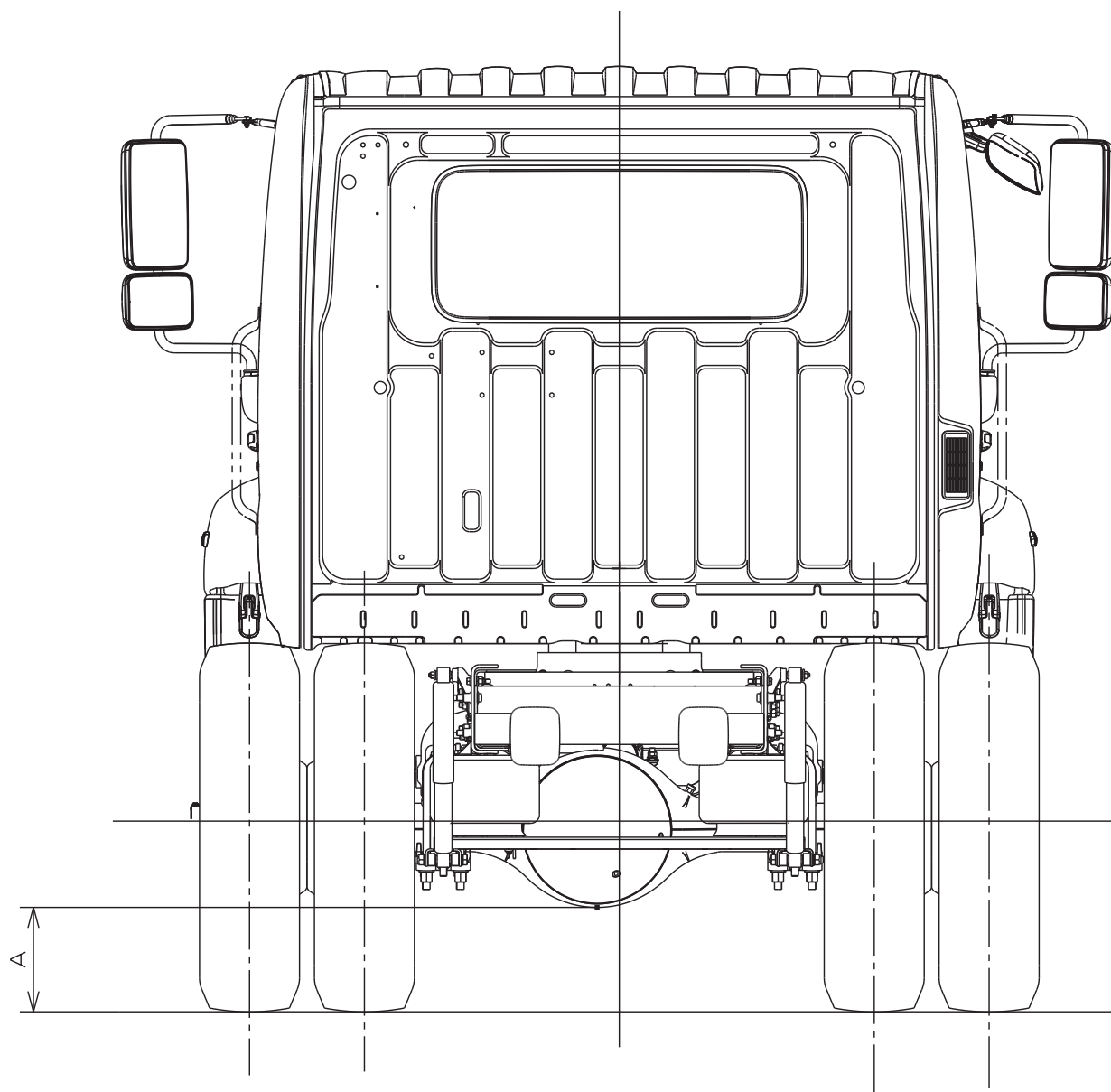
MODEL	TIRE	A
NE	10R22.5	270(10.6)
	245/70R19.5	180(7.1)
	11R22.5	285(11.2)
	255/70R22.5	225(8.9)
	295/75R22.5	265(10.4)
NF	11R22.5	285(11.2)
	295/75R22.5	265(10.4)



• REAR SIDE VIEW
(REAR AIR SUSPENSION)

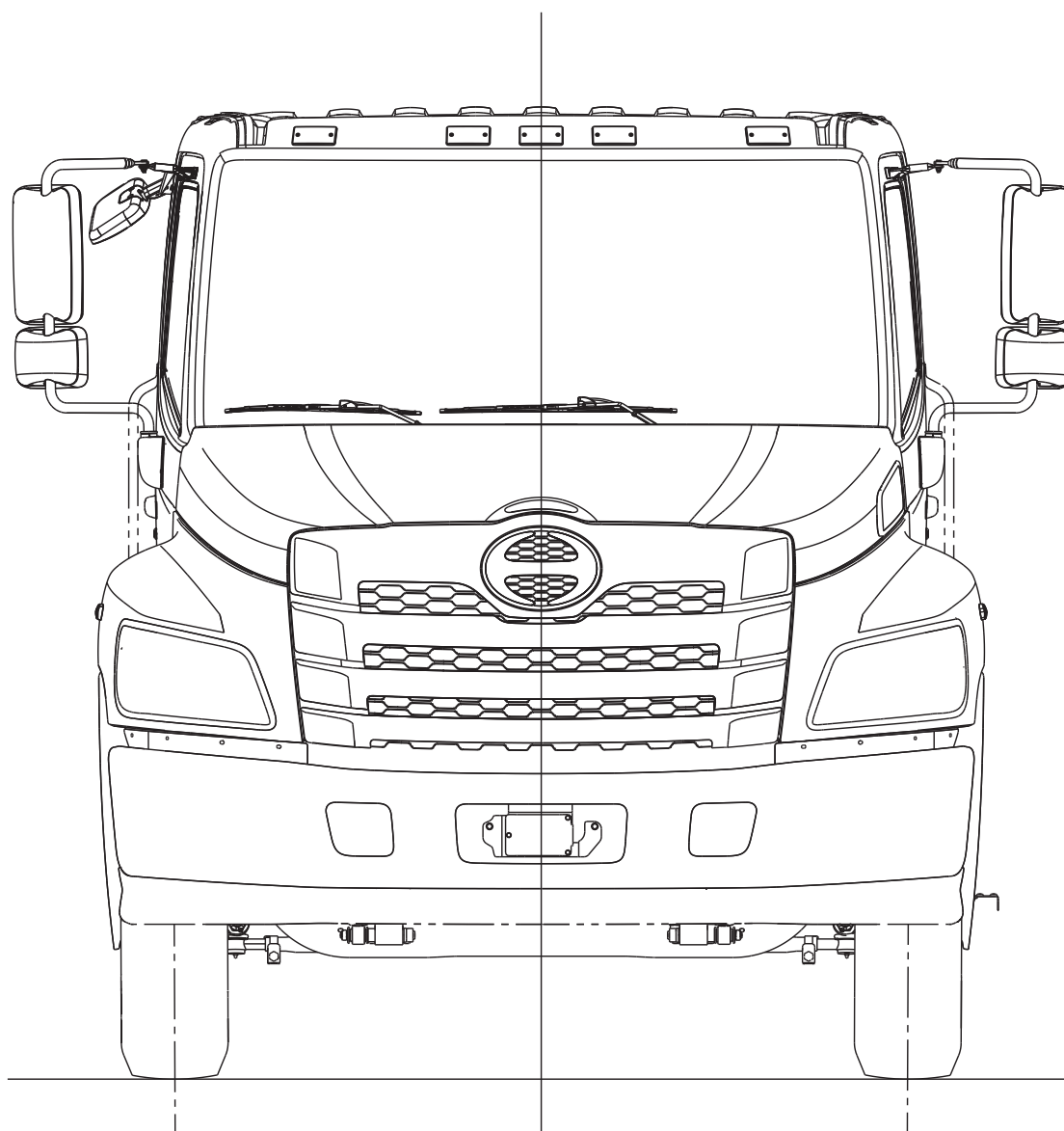
Unit : mm (in.)

MODEL	TIRE	A
NE	10R22.5	270(10.6)
	245/70R19.5	180(7.1)
	11R22.5	285(11.2)
	255/70R22.5	225(8.9)
	295/75R22.5	265(10.4)
NF	11R22.5	285(11.2)
	295/75R22.5	265(10.4)



MODEL : NJC1, NVC1 AND NHC1

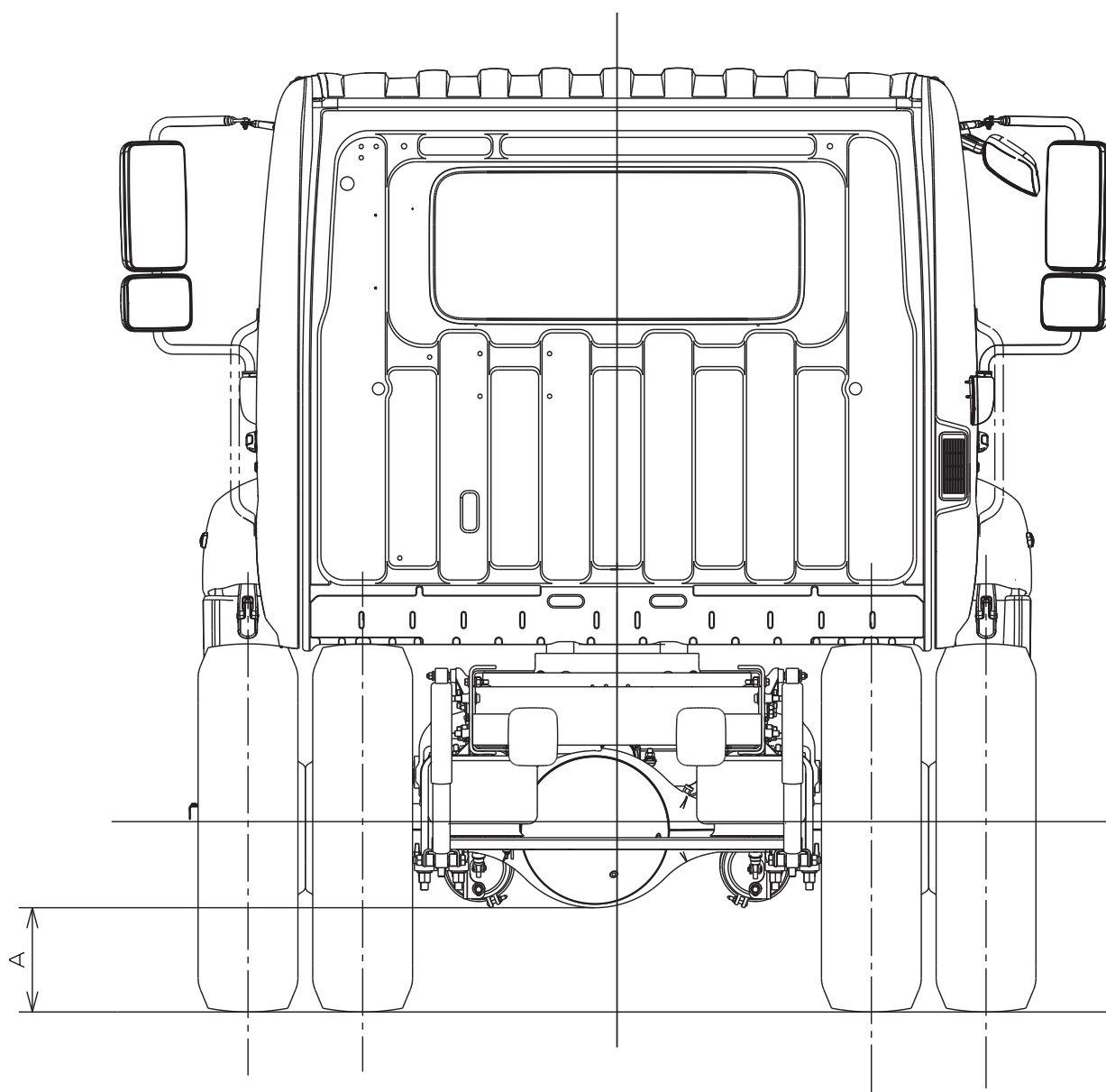
- FRONT SIDE VIEW



• REAR SIDE VIEW
(REAR AIR SUSPENSION)

Unit : mm (in.)

MODEL	RR AXLE	TIRE	A
NJ	MS-19	11R22.5	285(11.2)
		255/70R22.5	225(8.9)
		295/75R22.5	265(10.4)
NV	MS-21	11R22.5	285(11.2)
		295/75R22.5	265(10.4)
	RS-23 RS-25	11R22.5	255(10.0)
NH	RS-23 RS-25	11R22.5	255(10.0)
		295/75R22.5	235(9.3)

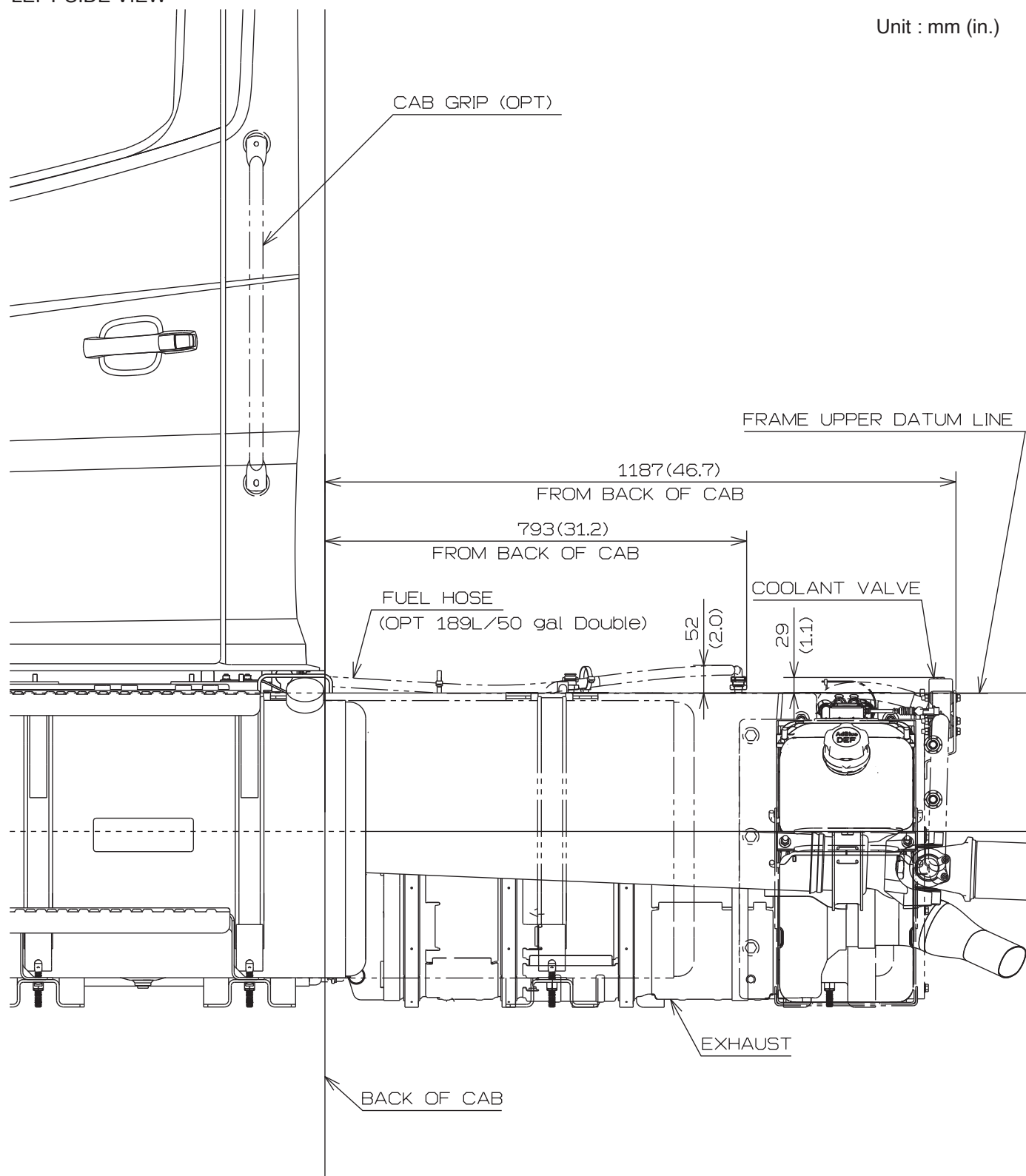


2. CAB BACK DRAWINGS

CHASSIS MODEL : NEC1 AND NFC1 < Day Cab >

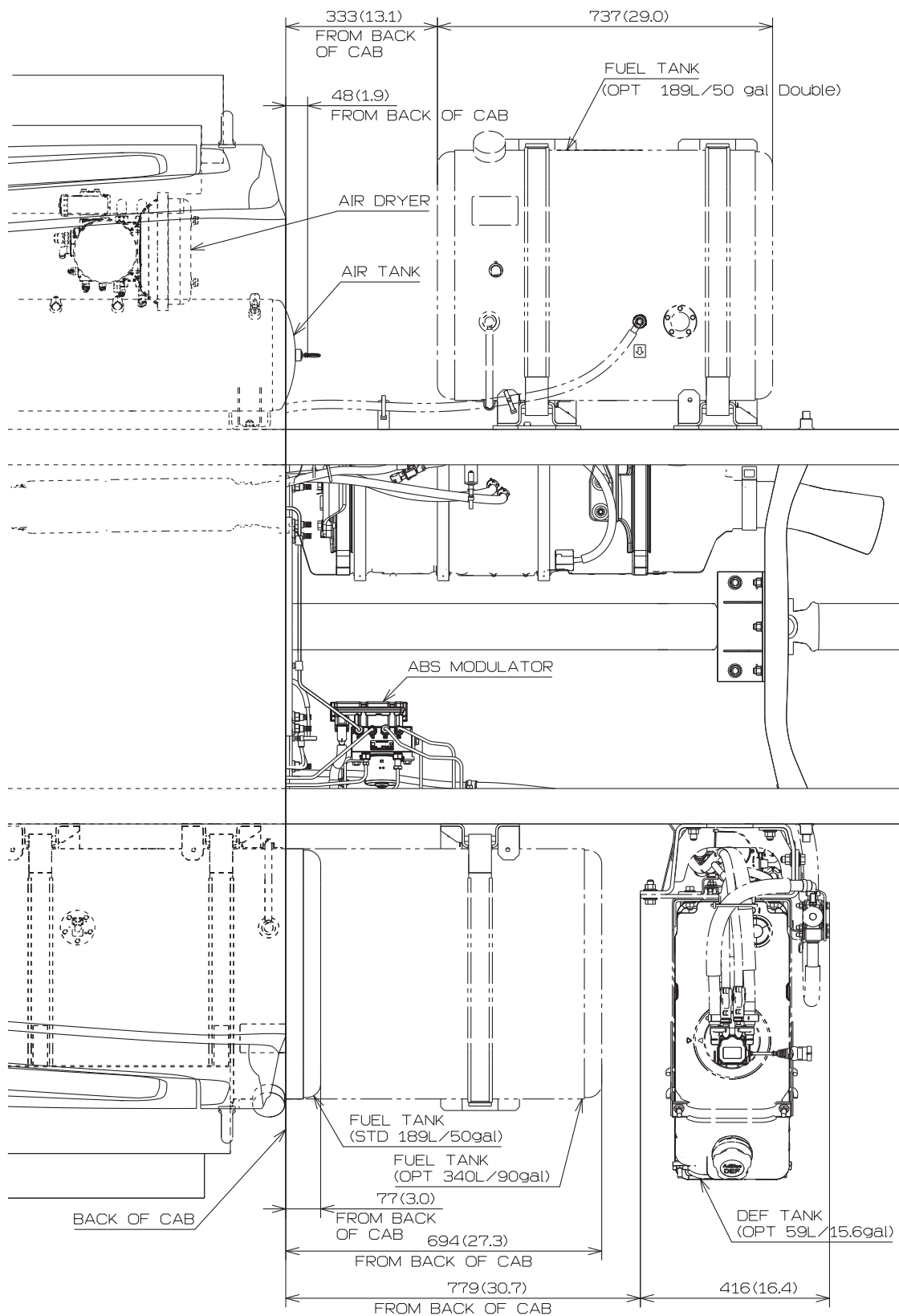
• LEFT SIDE VIEW

Unit : mm (in.)



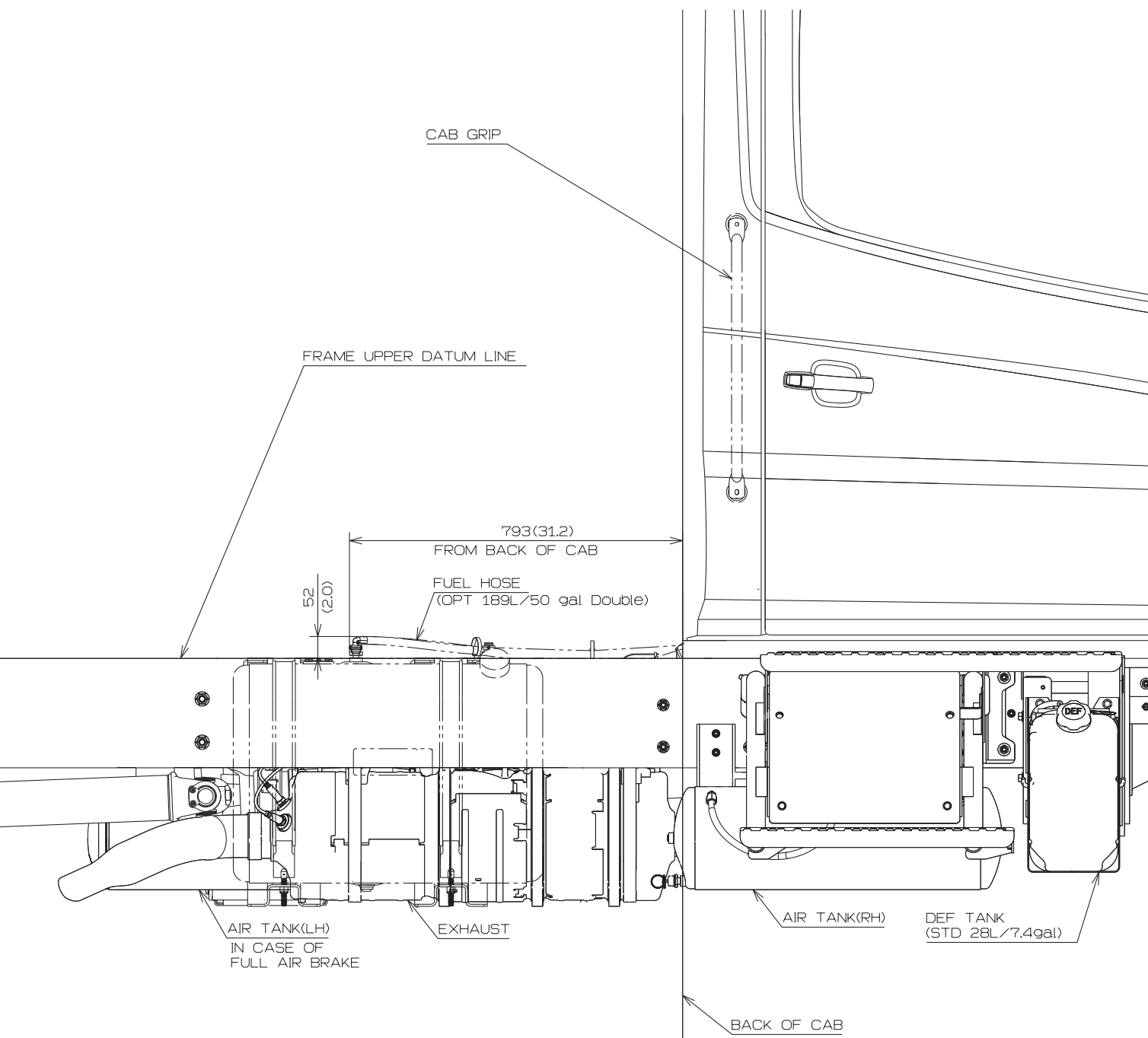
• UPPER SIDE VIEW

Unit : mm (in.)



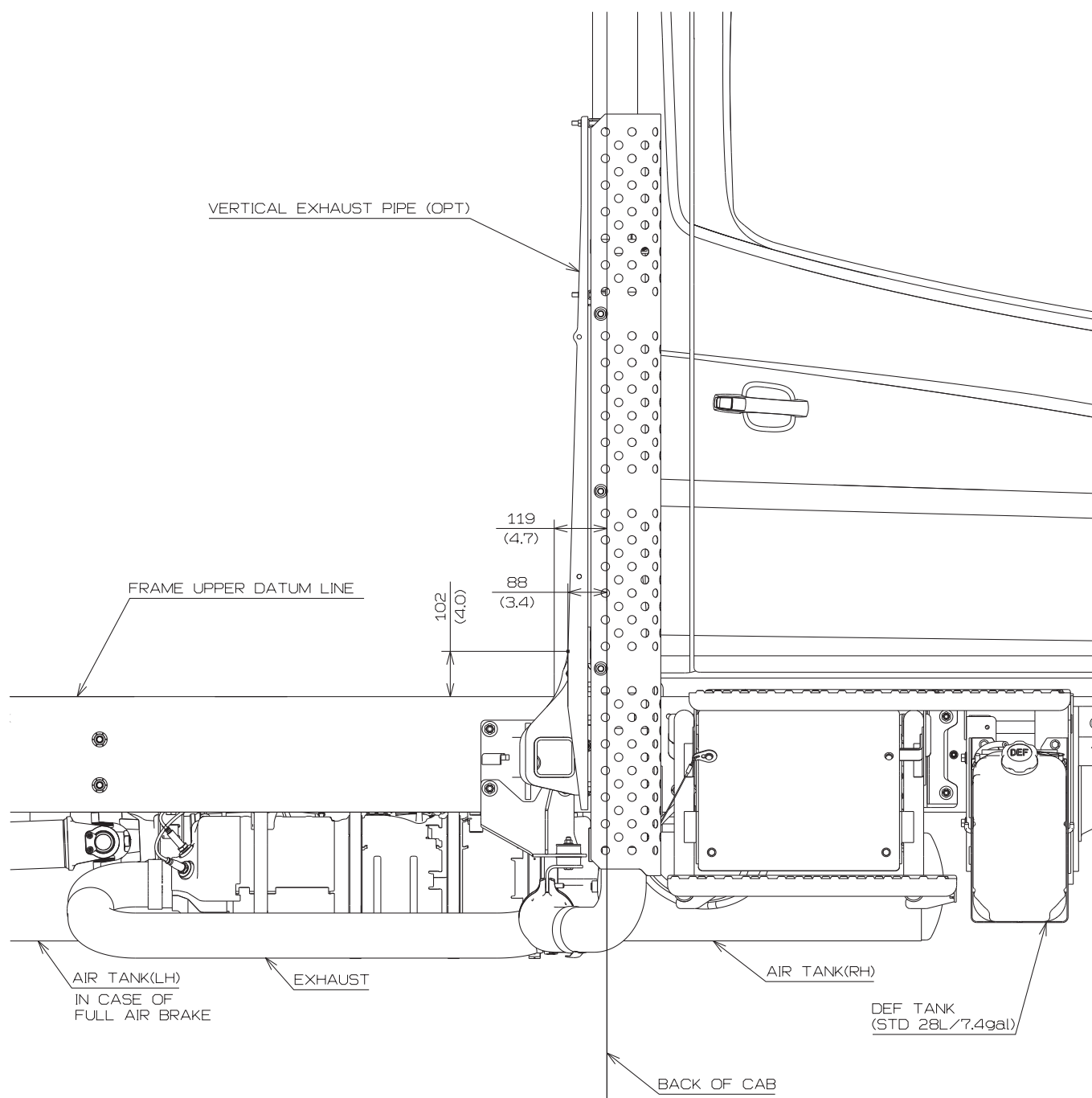
• RIGHT SIDE VIEW
(SHORT TAIL)

Unit : mm (in.)



- RIGHT SIDE VIEW
(VERTICAL TAIL)
< Day Cab ONLY >

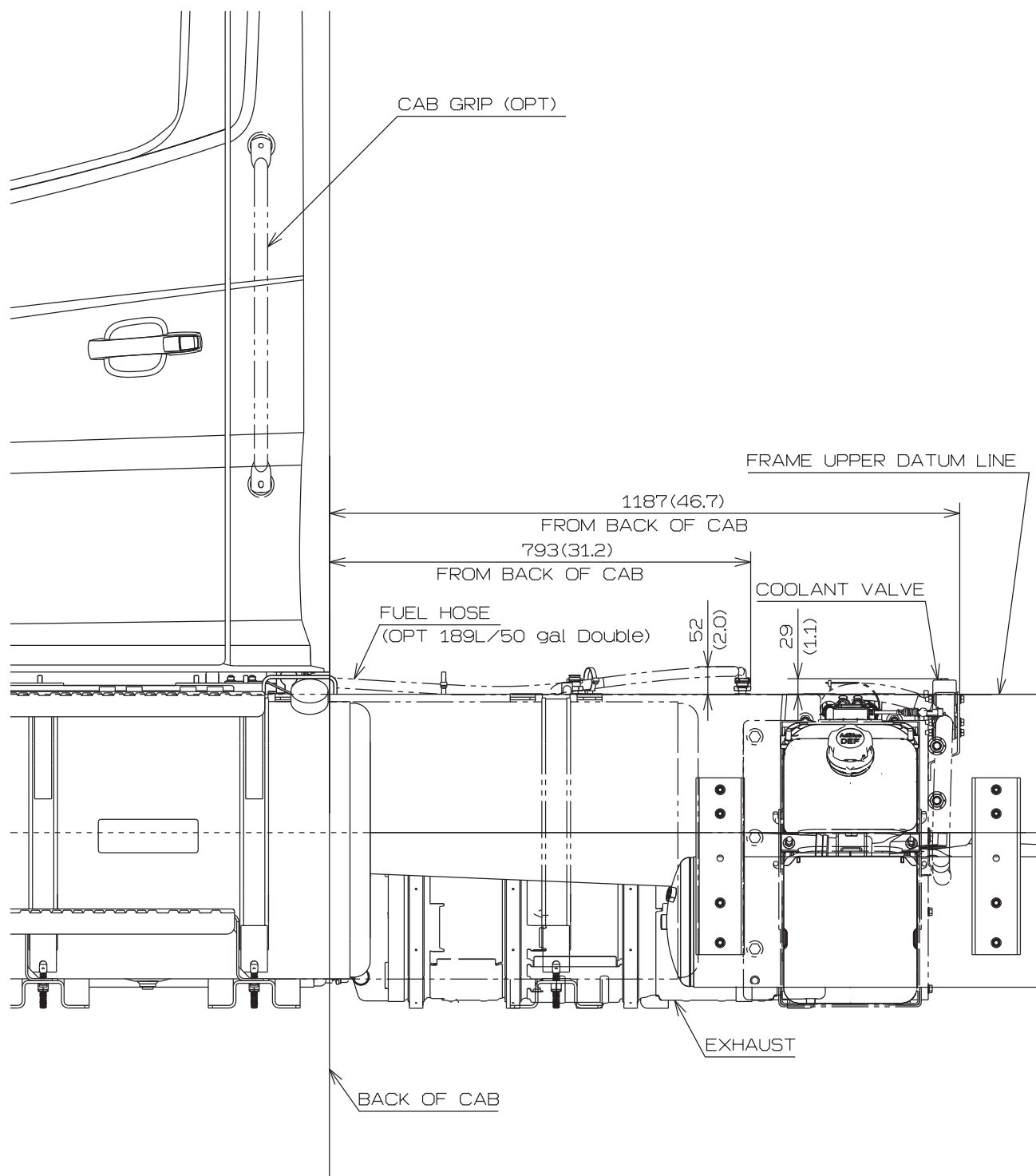
Unit : mm (in.)



**CHASSIS MODEL : NJC1 < Day Cab >
 NVC1 < Day Cab >
 NHC1**

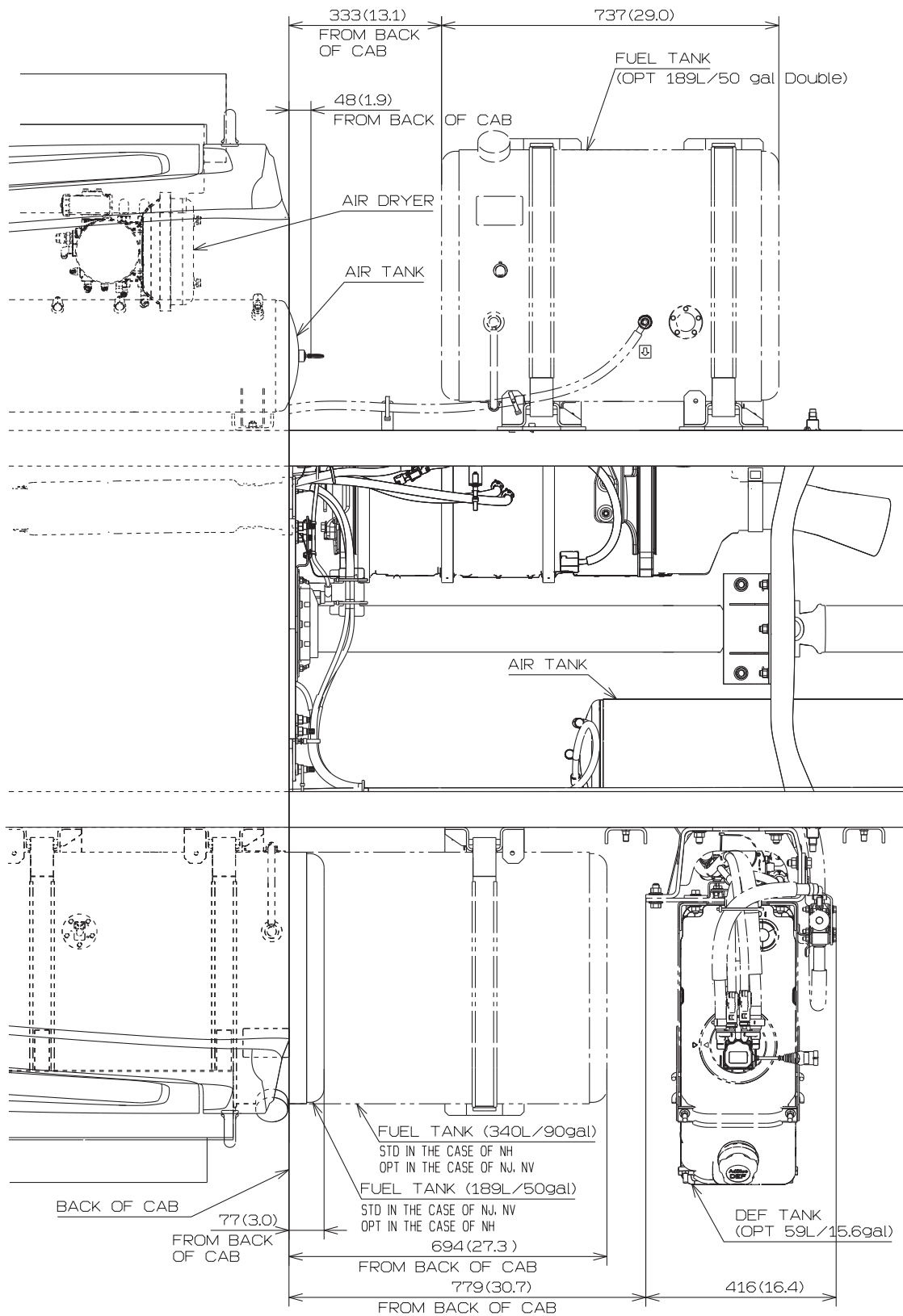
Unit : mm (in.)

• LEFT SIDE VIEW



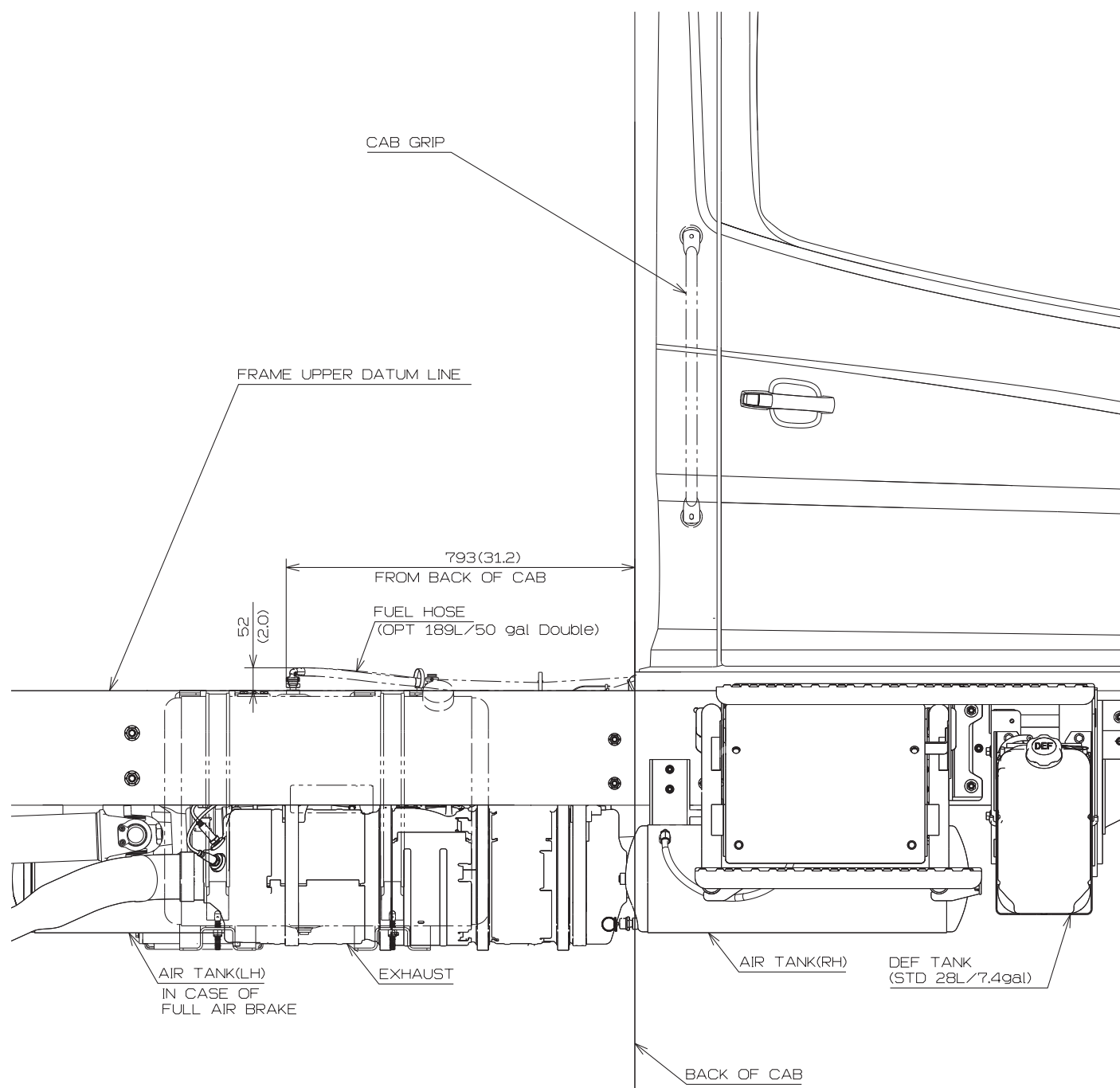
• UPPER SIDE VIEW

Unit : mm (in.)



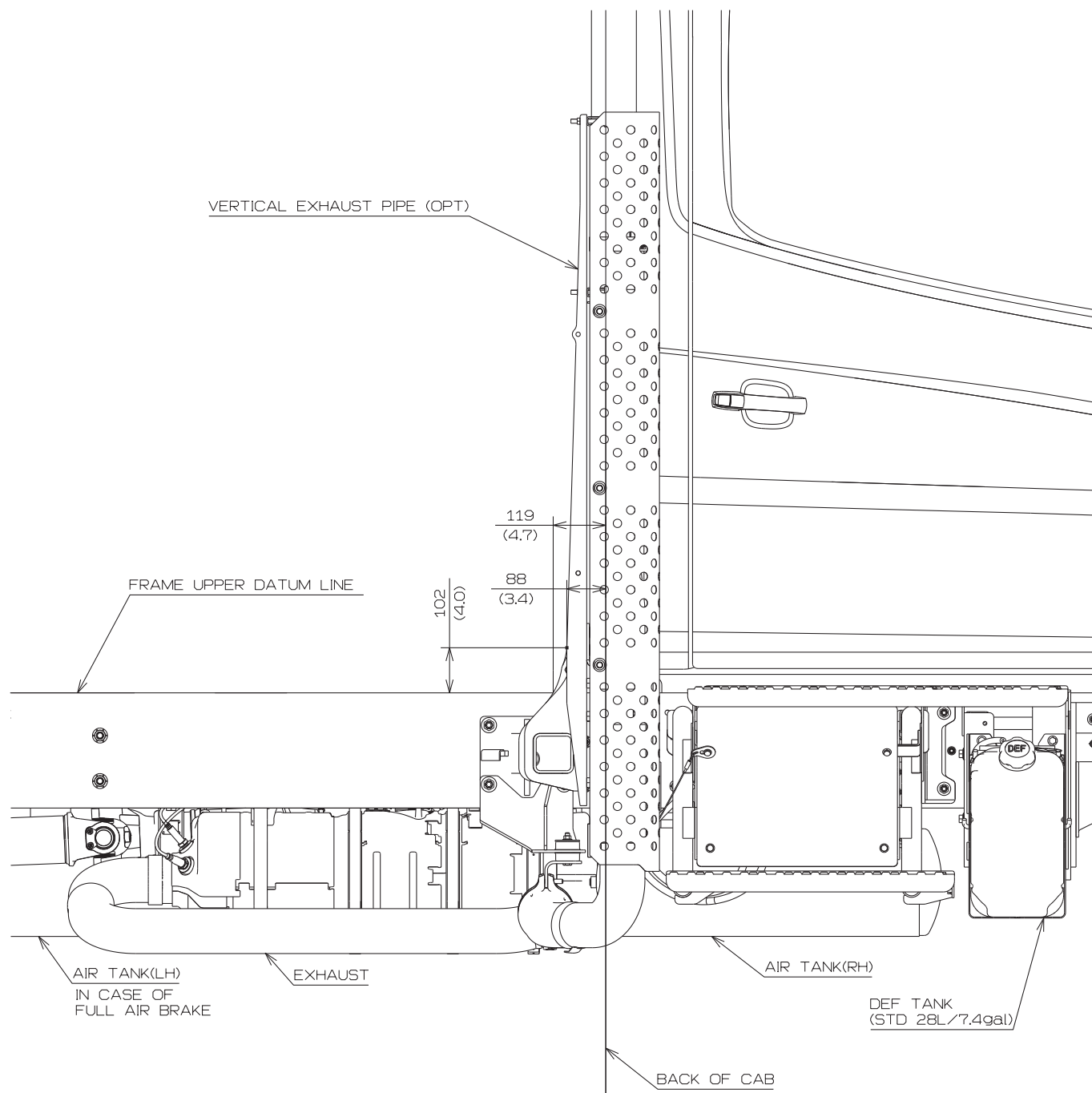
• RIGHT SIDE VIEW
(SHORT TAIL)

Unit : mm (in.)



- RIGHT SIDE VIEW
(VERTICAL TAIL)
< Day Cab ONLY >

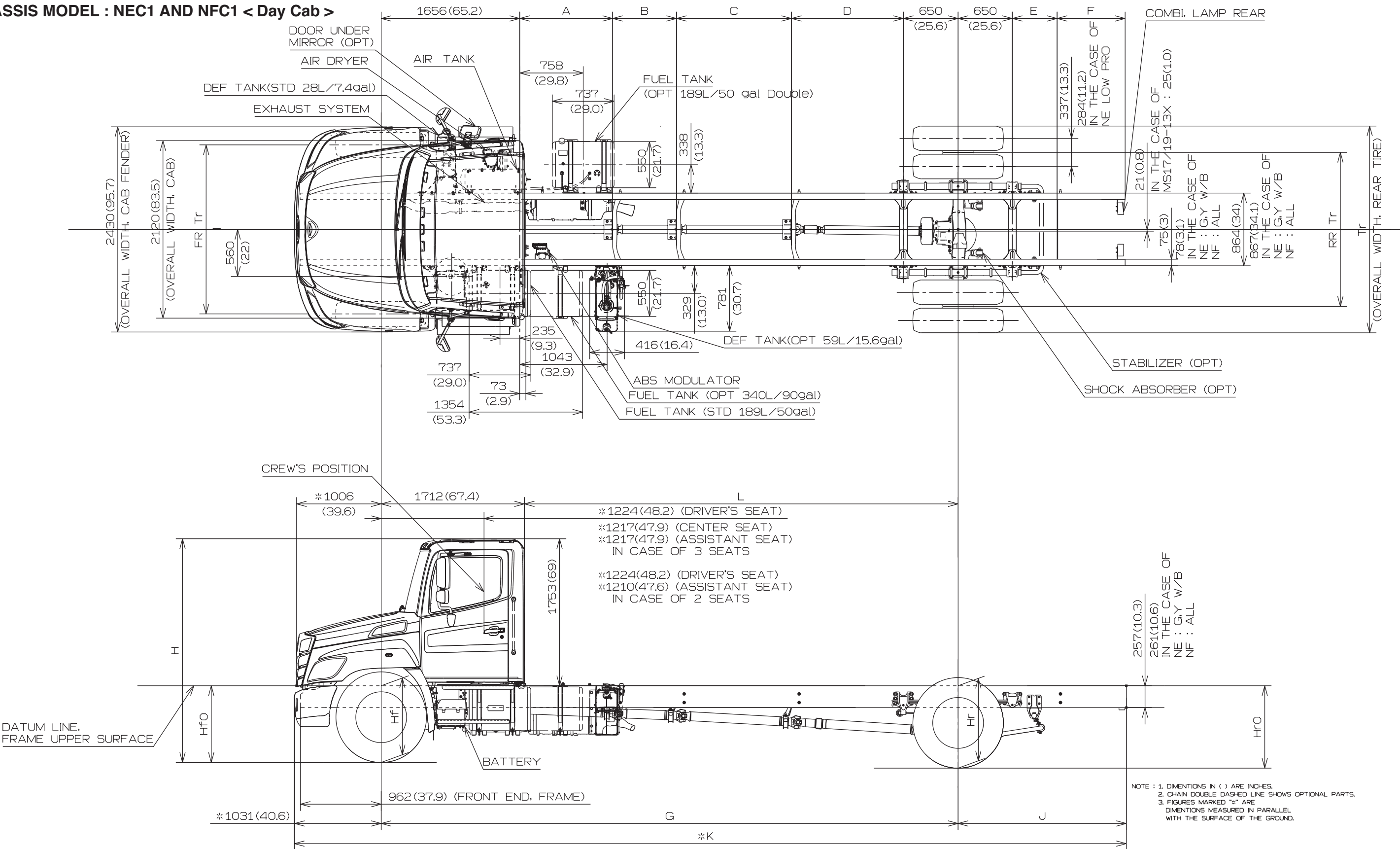
Unit : mm (in.)



3. CHASSIS DRAWINGS

Unit : mm (in.)

CHASSIS MODEL : NEC1 AND NFC1 < Day Cab >



• CHASSIS MODEL : NEC1 AND NFC1 < Day Cab >

DIMENSION OF CHASSIS

Unit : mm (in.)

W/B	A	B	C	D	E	F	G	J *	K *	L
J	804 (31.7)			1335 (52.6)	534 (21.0)	823 (32.4)	4445 (175.0)	2007 (79.0)	7483 (294.6)	2733 (107.6)
L	1109 (43.7)			1335 (52.6)	534 (21.0)	823 (32.4)	4750 (187.0)	2007 (79.0)	7788 (306.6)	3038 (119.6)
M	804 (31.7)	762 (30.0)		1335 (52.6)	534 (21.0)	823 (32.4)	5207 (205.0)	2007 (79.0)	8245 (324.6)	3495 (137.6)
P	804 (31.7)	1067 (42.0)		1335 (52.6)	534 (21.0)	823 (32.4)	5512 (217.0)	2007 (79.0)	8550 (336.6)	3800 (149.6)
R	1109 (43.7)	1219 (48.0)		1335 (52.6)	534 (21.0)	823 (32.4)	5969 (235.0)	2007 (79.0)	9007 (354.6)	4257 (167.6)
T	1109 (43.7)	1676 (66.0)		1335 (52.6)	534 (21.0)	823 (32.4)	6426 (253.0)	2007 (79.0)	9464 (372.6)	4714 (185.6)
V	1109 (43.7)	762 (30.0)	1372 (54.0)	1335 (52.6)	534 (21.0)	823 (32.4)	6883 (271.0)	2007 (79.0)	9921 (390.6)	5171 (203.6)
W	1109 (43.7)	762 (30.0)	1600 (63.0)	1335 (52.6)	534 (21.0)	823 (32.4)	7112 (280.0)	2007 (79.0)	10150 (399.6)	5400 (212.6)

* In the case of 2464mm (97") ROHF, add 457mm (18") to J and K.

W W/B is NF only.

• CHASSIS MODEL : NEC1 AND NFC1 < Day Cab >

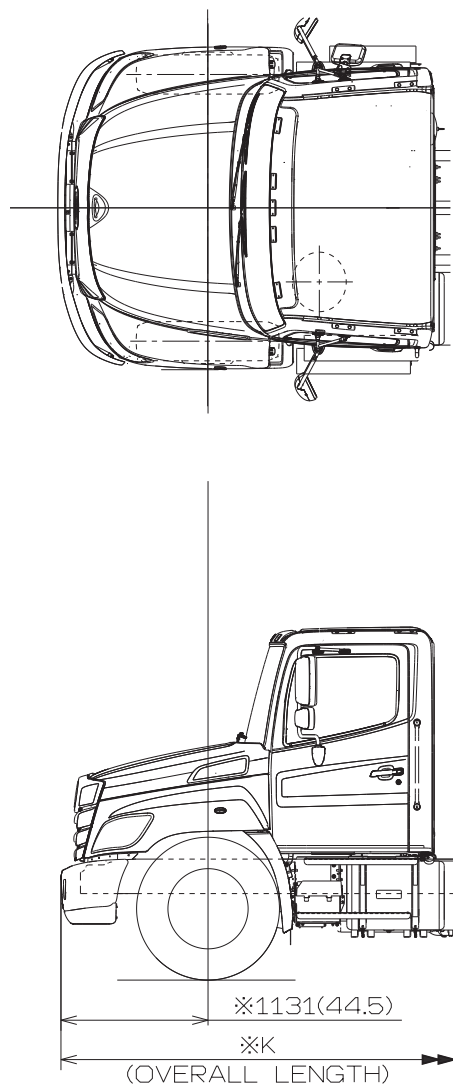
DIMENSION OF HEIGHT FROM GROUND

Unit : mm (in.)

MODEL	FR AXLE	RR AXLE	TIRE	WHEEL	GROUND HEIGHT, FRAME UPPER SURFACE				FR Tr	RR Tr	Tr	H
					Hf0	Hf	Hr	Hr0				
NEC1	10000lbs		11R22.5	22.5X8.25-168	925 (36.4)	935 (36.8)	1010 (39.8)	1035 (40.7)	2005 (78.9)	1830 (72.0)	2445 (96.3)	2715 (106.9)
			255/70R22.5		865 (34.1)	875 (34.4)	950 (37.4)	975 (38.4)	2005 (78.9)	1830 (72.0)	2430 (95.7)	2655 (104.5)
			295/75R22.5		905 (35.6)	915 (36.0)	990 (39.0)	1015 (40.0)	2005 (78.9)	1830 (72.0)	2455 (96.7)	2695 (106.1)
	8000lbs		245/70R19.5	19.5X6.75-142	830 (32.7)	835 (32.9)	900 (35.4)	930 (36.6)	2025 (79.7)	1840 (72.4)	2360 (92.9)	2615 (103.0)
			10R22.5	22.5X8.25-168	920 (36.2)	930 (36.6)	995 (39.2)	1020 (40.2)	1985 (78.1)	1830 (72.0)	2425 (95.5)	2705 (106.5)
			11R22.5		935 (36.8)	945 (37.2)	1010 (39.8)	1035 (40.7)	1985 (78.1)	1830 (72.0)	2445 (96.3)	2720 (107.1)
			255/70R22.5		875 (34.4)	885 (34.8)	950 (37.4)	975 (38.4)	1985 (78.1)	1830 (72.0)	2430 (95.7)	2660 (104.7)
			295/75R22.5		915 (36.0)	925 (36.4)	990 (39.0)	1015 (40.0)	1985 (78.1)	1830 (72.0)	2455 (96.7)	2700 (106.3)
	12000lbs		11R22.5	22.5X8.25-168	920 (36.2)	935 (36.8)	1030 (40.6)	1060 (41.7)	2005 (78.9)	1870 (73.6)	2485 (97.8)	2720 (107.1)
			295/75R22.5		900 (35.4)	915 (36.0)	1010 (39.8)	1040 (40.9)	2005 (78.9)	1870 (73.6)	2495 (98.2)	2700 (106.3)

• CHASSIS MODEL : NEC1 AND NFC1 < Day Cab >

OPTION BUMPER



Unit : mm (in.)

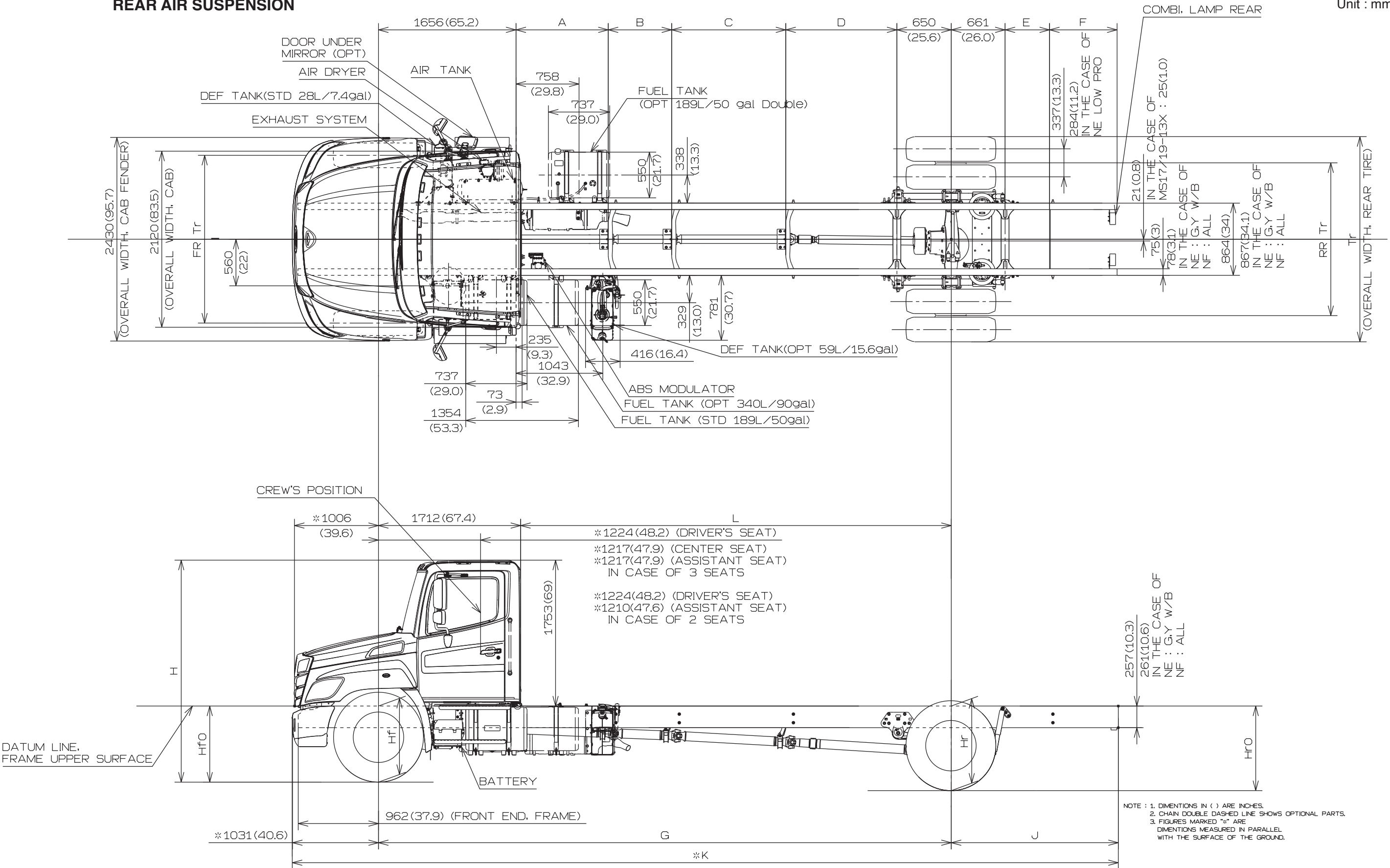
	Wheel base	K*
J	4,445 (175)	7,582 (298.5)
L	4,750 (187)	7,887 (310.5)
M	5,207 (205)	8,344 (328.5)
P	5,512 (217)	8,649 (340.5)
R	5,969 (235)	9,106 (358.5)
T	6,426 (253)	9,563 (376.5)
V	6,883 (271)	10,020 (394.5)
W	7,112 (280)	10,249 (403.5)

* In the case of 2464mm (97") ROHF, add 457mm (18") to K.

NOTE:1.FIGURES MARKED "※" ARE DIMENSIONS MEASURED
IN PARALLEL WITH THE SURFACE OF THE GROUND.
2.DIMENSIONS IN () ARE INCHES.

CHASSIS MODEL : NEC1 AND NFC1 < Day Cab >
REAR AIR SUSPENSION

Unit : mm (in.)



• CHASSIS MODEL : NEC1 AND NFC1 < Day Cab >
REAR AIR SUSPENSION

DIMENSION OF CHASSIS

Unit : mm (in.)

W/B	A	B	C	D	E	F	G	J *	K *	L
J	804 (31.7)			1335 (52.6)	523 (20.6)	823 (32.4)	4445 (175.0)	2007 (79.0)	7483 (294.6)	2733 (107.6)
L	1109 (43.7)			1335 (52.6)	523 (20.6)	823 (32.4)	4750 (187.0)	2007 (79.0)	7788 (306.6)	3038 (119.6)
M	804 (31.7)	762 (30.0)		1335 (52.6)	523 (20.6)	823 (32.4)	5207 (205.0)	2007 (79.0)	8245 (324.6)	3495 (137.6)
P	804 (31.7)	1067 (42.0)		1335 (52.6)	523 (20.6)	823 (32.4)	5512 (217.0)	2007 (79.0)	8550 (336.6)	3800 (149.6)
R	1109 (43.7)	1219 (48.0)		1335 (52.6)	523 (20.6)	823 (32.4)	5969 (235.0)	2007 (79.0)	9007 (354.6)	4257 (167.6)
T	1109 (43.7)	1676 (66.0)		1335 (52.6)	523 (20.6)	823 (32.4)	6426 (253.0)	2007 (79.0)	9464 (372.6)	4714 (185.6)
V	1109 (43.7)	762 (30.0)	1372 (54.0)	1335 (52.6)	523 (20.6)	823 (32.4)	6883 (271.0)	2007 (79.0)	9921 (390.6)	5171 (203.6)
W	1109 (43.7)	762 (30.0)	1600 (63.0)	1335 (52.6)	523 (20.6)	823 (32.4)	7112 (280.0)	2007 (79.0)	10150 (399.6)	5400 (212.6)

* In the case of 2464mm (97") ROHF, add 457mm (18") to J and K.

W W/B is NF only.

• CHASSIS MODEL : NEC1 AND NFC1 < Day Cab >
REAR AIR SUSPENSION

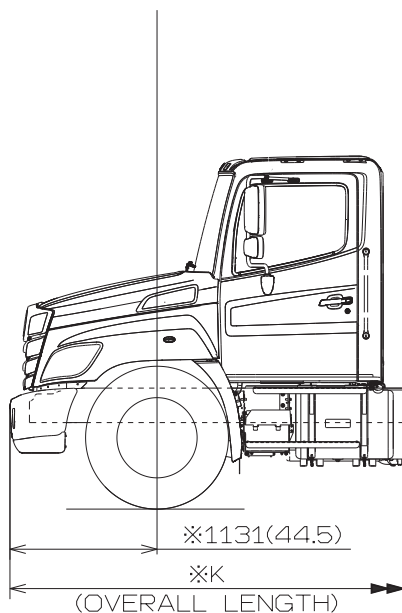
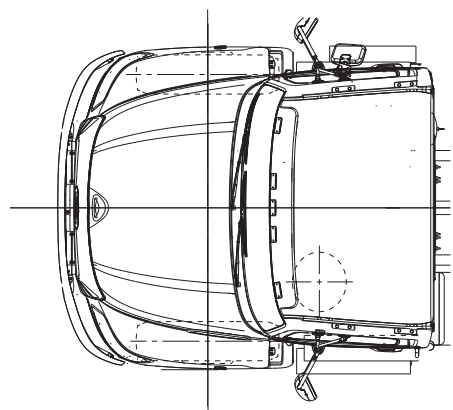
DIMENSION OF HEIGHT FROM GROUND

Unit : mm (in.)

MODEL	FR AXLE	RR AXLE	TIRE	WHEEL	GROUND HEIGHT, FRAME UPPER SURFACE				FR Tr	RR Tr	Tr	H
					Hf0	Hf	Hr	Hr0				
NEC1	10000lbs		11R22.5	22.5X8.25-168	925 (36.4)	935 (36.8)	990 (39.0)	1015 (40.0)	2005 (78.9)	1830 (72.0)	2445 (96.3)	2710 (106.7)
			255/70R22.5		865 (34.1)	875 (34.4)	930 (36.6)	955 (37.6)	2005 (78.9)	1830 (72.0)	2430 (95.7)	2650 (104.3)
			295/75R22.5		905 (35.6)	915 (36.0)	970 (38.2)	995 (39.2)	2005 (78.9)	1830 (72.0)	2455 (96.7)	2690 (105.9)
	8000lbs		245/70R19.5	19.5X6.75-142	830 (32.7)	835 (32.9)	885 (34.8)	900 (35.4)	2025 (79.7)	1840 (72.4)	2360 (92.9)	2610 (102.8)
			10R22.5	22.5X8.25-168	920 (36.2)	930 (36.6)	975 (38.4)	990 (39.0)	1985 (78.1)	1830 (72.0)	2425 (95.5)	2700 (106.3)
			11R22.5		935 (36.8)	945 (37.2)	990 (39.0)	1005 (39.6)	1985 (78.1)	1830 (72.0)	2445 (96.3)	2715 (106.9)
			255/70R22.5		875 (34.4)	885 (34.8)	930 (36.6)	945 (37.2)	1985 (78.1)	1830 (72.0)	2430 (95.7)	2655 (104.5)
			295/75R22.5		915 (36.0)	925 (36.4)	970 (38.2)	985 (38.8)	1985 (78.1)	1830 (72.0)	2455 (96.7)	2695 (106.1)
NFC1	12000lbs		11R22.5	22.5X8.25-168	930 (36.6)	940 (37.0)	995 (39.2)	1010 (39.8)	2005 (78.9)	1870 (73.6)	2485 (97.8)	2710 (106.7)
			295/75R22.5		910 (35.8)	920 (36.2)	975 (38.4)	990 (39.0)	2005 (78.9)	1870 (73.6)	2495 (98.2)	2690 (105.9)

• CHASSIS MODEL : NEC1 AND NFC1 < Day Cab >
REAR AIR SUSPENSION

OPTION BUMPER



Unit : mm (in.)

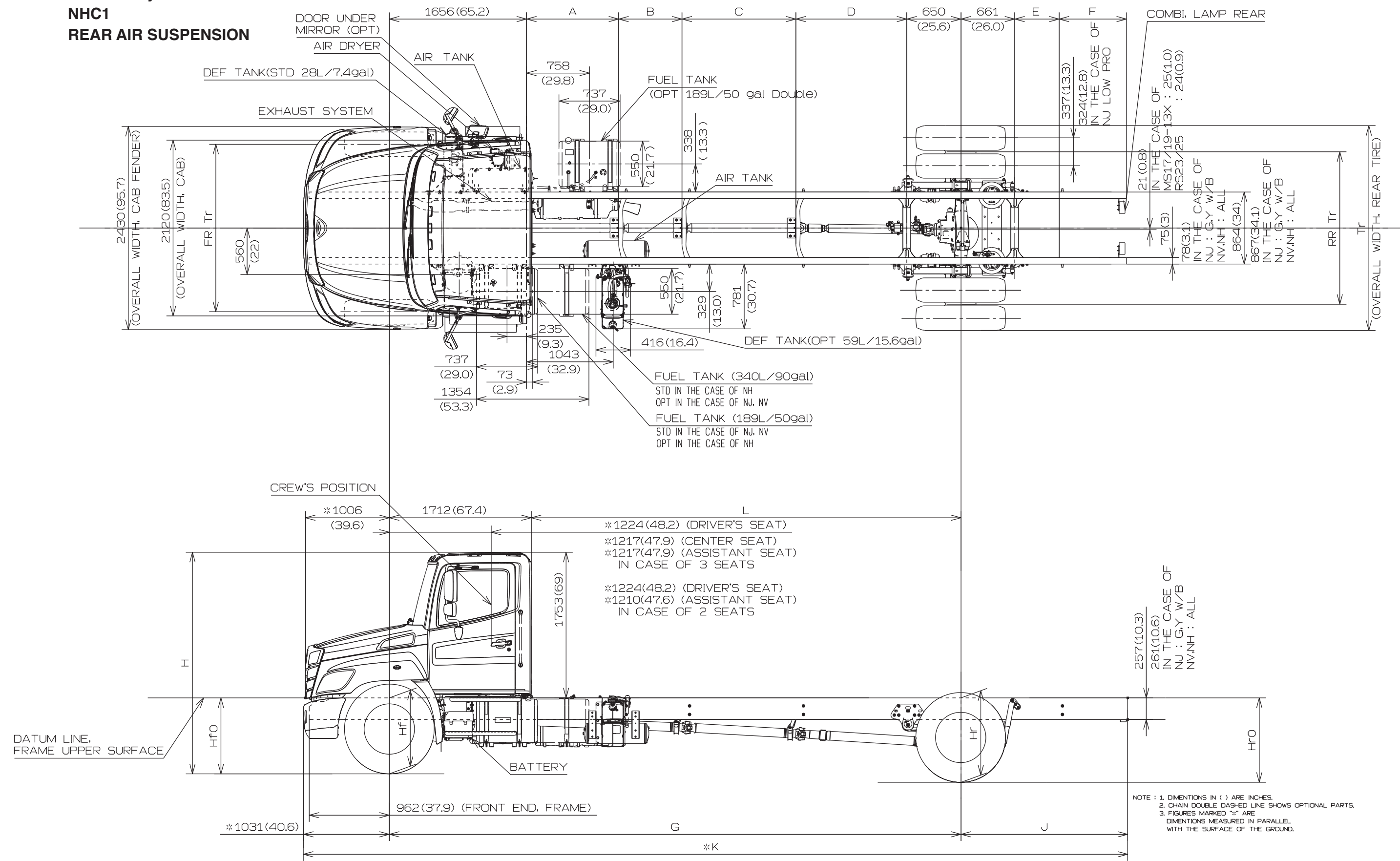
	Wheel base	K*
J	4,445 (175)	7,582 (298.5)
L	4,750 (187)	7,887 (310.5)
M	5,207 (205)	8,344 (328.5)
P	5,512 (217)	8,649 (340.5)
R	5,969 (235)	9,106 (358.5)
T	6,426 (253)	9,563 (376.5)
V	6,883 (271)	10,020 (394.5)
W	7,112 (280)	10,249 (403.5)

* In the case of 2464mm (97") ROHF, add 457mm (18") to K.

NOTE:1.FIGURES MARKED "※" ARE DIMENSIONS MEASURED
IN PARALLEL WITH THE SURFACE OF THE GROUND.
2.DIMENSIONS IN () ARE INCHES.

CHASSIS MODEL : NJC1 < Day Cab >
NVC1 < Day Cab >
NHC1
REAR AIR SUSPENSION

Unit : mm (in.)



• CHASSIS MODEL : NJC1 < Day Cab >
 NVC1 < Day Cab >
 NHC1
 REAR AIR SUSPENSION

DIMENSION OF CHASSIS

Unit : mm (in.)

W/B	A	B	C	D	E	F	G	J *	K *	L
J	804 (31.7)			1335 (52.6)	523 (20.6)	823 (32.4)	4445 (175.0)	2007 (79.0)	7483 (294.6)	2733 (107.6)
L	1109 (43.7)			1335 (52.6)	523 (20.6)	823 (32.4)	4750 (187.0)	2007 (79.0)	7788 (306.6)	3038 (119.6)
M	804 (31.7)	762 (30.0)		1335 (52.6)	523 (20.6)	823 (32.4)	5207 (205.0)	2007 (79.0)	8245 (324.6)	3495 (137.6)
P	804 (31.7)	1067 (42.0)		1335 (52.6)	523 (20.6)	823 (32.4)	5512 (217.0)	2007 (79.0)	8550 (336.6)	3800 (149.6)
R	1109 (43.7)	1219 (48.0)		1335 (52.6)	523 (20.6)	823 (32.4)	5969 (235.0)	2007 (79.0)	9007 (354.6)	4257 (167.6)
T	1109 (43.7)	1676 (66.0)		1335 (52.6)	523 (20.6)	823 (32.4)	6426 (253.0)	2007 (79.0)	9464 (372.6)	4714 (185.6)
V	1109 (43.7)	762 (30.0)	1372 (54.0)	1335 (52.6)	523 (20.6)	823 (32.4)	6883 (271.0)	2007 (79.0)	9921 (390.6)	5171 (203.6)

* In the case of 2464mm (97") ROHF, add 457mm (18") to J and K.

• CHASSIS MODEL : NJC1 < Day Cab >
 NVC1 < Day Cab >
 NHC1
 REAR AIR SUSPENSION

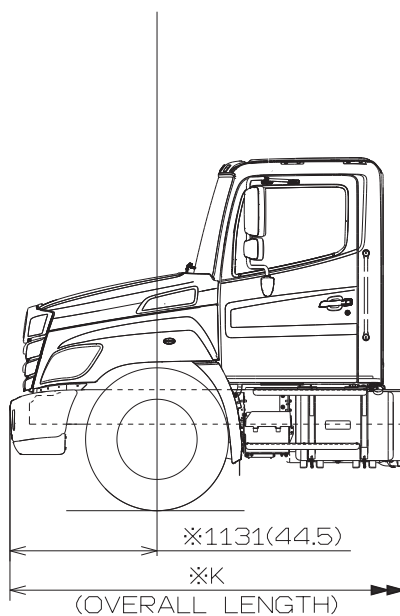
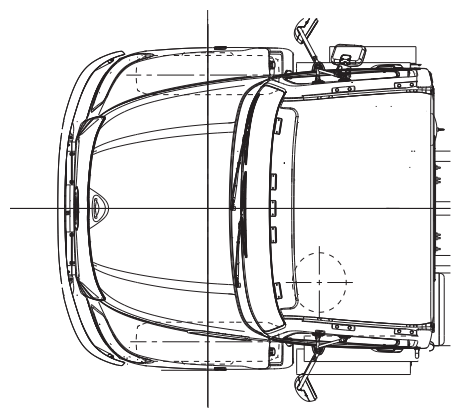
DIMENSION OF HEIGHT FROM GROUND

Unit : mm (in.)

MODEL	FR AXLE	RR AXLE	TIRE	WHEEL	GROUND HEIGHT, FRAME UPPER SURFACE				FR Tr	RR Tr	Tr	H
					Hf0	Hf	Hr	Hr0				
NJC1	8000lbs		245/70R19.5	19.5X7.50-162	835 (32.9)	840 (33.1)	885 (34.8)	900 (35.4)	2030 (79.9)	1840 (72.4)	2410 (94.9)	2610 (102.8)
			11R22.5	22.5X8.25-168	940 (37.0)	950 (37.4)	990 (39.0)	1005 (39.6)	2020 (79.5)	1835 (72.2)	2450 (96.5)	2720 (107.1)
			255/70R22.5		880 (34.6)	890 (35.0)	930 (36.6)	945 (37.2)	2020 (79.5)	1835 (72.2)	2435 (95.9)	2660 (104.7)
			295/75R22.5		920 (36.2)	930 (36.6)	970 (38.2)	985 (38.8)	2020 (79.5)	1835 (72.2)	2460 (96.9)	2700 (106.3)
	10000lbs		11R22.5	22.5X8.25-168	925 (36.4)	935 (36.8)	990 (39.0)	1015 (40.0)	2020 (79.5)	1835 (72.2)	2450 (96.5)	2710 (106.7)
			255/70R22.5		865 (34.1)	875 (34.4)	930 (36.6)	955 (37.6)	2020 (79.5)	1835 (72.2)	2435 (95.9)	2650 (104.3)
			295/75R22.5		905 (35.6)	915 (36.0)	970 (38.2)	995 (39.2)	2020 (79.5)	1835 (72.2)	2460 (96.9)	2690 (105.9)
NVC1	10000lbs or 12000lbs		11R22.5	22.5X8.25-168	925 (36.4)	935 (36.8)	995 (39.2)	1010 (39.8)	2020 (79.5)	1835 (72.2)	2450 (96.5)	2710 (106.7)
			295/75R22.5		905 (35.6)	915 (36.0)	975 (38.4)	990 (39.0)	2020 (79.5)	1835 (72.2)	2460 (96.9)	2690 (105.9)
	14000lbs		11R22.5		940 (37.0)	945 (37.2)	995 (39.2)	1005 (39.6)	2020 (79.5)	1835 (72.2)	2450 (96.5)	2715 (106.9)
NHC1	12000lbs		11R22.5	22.5X8.25-168	925 (36.4)	935 (36.8)	995 (39.2)	1010 (39.8)	2020 (79.5)	1835 (72.2)	2450 (96.5)	2710 (106.7)
	14000lbs		11R22.5		940 (37.0)	945 (37.2)	995 (39.2)	1005 (39.6)	2020 (79.5)	1835 (72.2)	2450 (96.5)	2715 (106.9)
			Fr : 295/75R22.5-7160 Rr : 295/75R22.5		920 (36.2)	925 (36.4)	975 (38.4)	985 (38.8)	2020 (79.5)	1835 (72.2)	2460 (96.9)	2695 (106.1)

- CHASSIS MODEL : NJC1 < Day Cab >
- NVC1 < Day Cab >
- NHC1
- REAR AIR SUSPENSION

OPTION BUMPER



Unit : mm (in.)

	Wheel base	K*
J	4,445 (175)	7,582 (298.5)
L	4,750 (187)	7,887 (310.5)
M	5,207 (205)	8,344 (328.5)
P	5,512 (217)	8,649 (340.5)
R	5,969 (235)	9,106 (358.5)
T	6,426 (253)	9,563 (376.5)
V	6,883 (271)	10,020 (394.5)

* In the case of 2464mm (97") ROHF, add 457mm (18") to K.

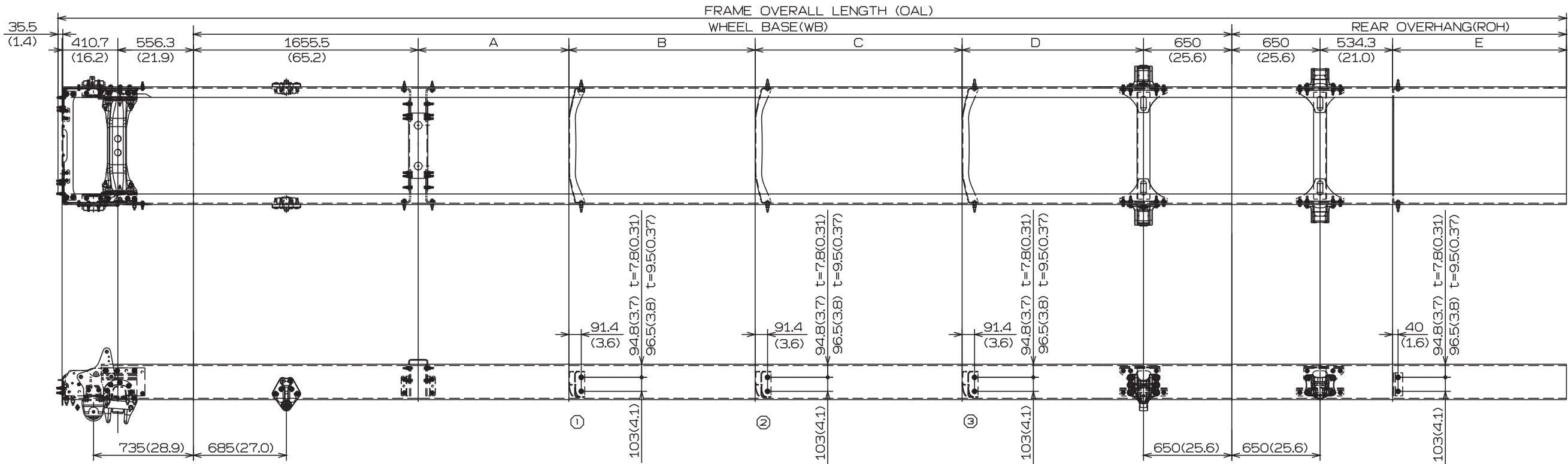
NOTE:1.FIGURES MARKED "※" ARE DIMENSIONS MEASURED
IN PARALLEL WITH THE SURFACE OF THE GROUND.
2.DIMENSIONS IN () ARE INCHES.

4. CHASSIS FRAME DRAWINGS

Unit : mm (in.)

CHASSIS MODEL : All models with day cab leaf suspension

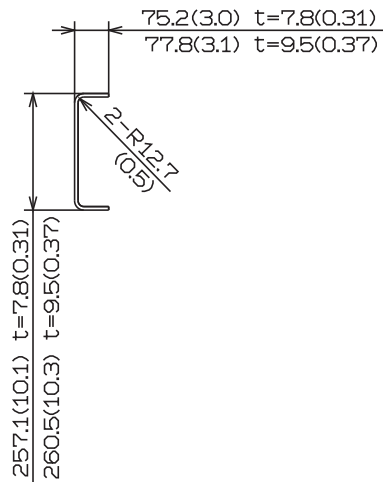
1) DETAIL OF CHASSIS FRAME



DIMENSION OF CHASSIS

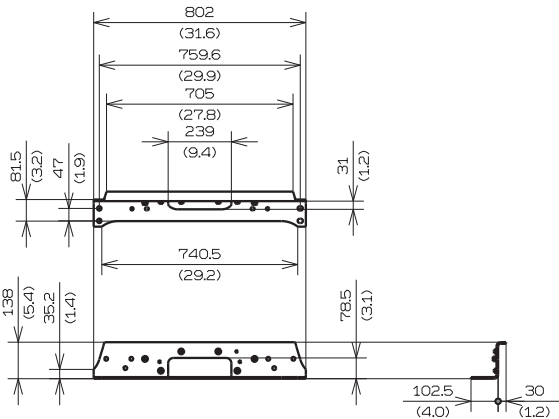
	WB	A	B	C	D	E	ROH	OAL
J	4445.0 (175)	804.1 (31.7)		1335.4 (52.6)		822.7 (32.4) 1279.7 (50.4)	2007 (79) 2464 (97)	7449.0 (293.3) 7906.0 (311.3)
L	4749.8 (187)	1108.9 (43.7)		1335.4 (52.6)		822.7 (32.4) 1279.7 (50.4)	2007 (79) 2464 (97)	7753.8 (305.3) 8210.8 (323.3)
M	5207.0 (205)	804.1 (31.7)	762 (30)	1335.4 (52.6)		822.7 (32.4) 1279.7 (50.4)	2007 (79) 2464 (97)	8211.0 (323.3) 8668.0 (341.3)
P	5511.8 (217)	804.1 (31.7)	1066.8 (42)	1335.4 (52.6)		822.7 (32.4) 1279.7 (50.4)	2007 (79) 2464 (97)	8515.8 (335.3) 8972.8 (353.3)
R	5969.0 (235)	1108.9 (43.7)	1219.2 (48)	1335.4 (52.6)		822.7 (32.4) 1279.7 (50.4)	2007 (79) 2464 (97)	8973.0 (353.3) 9430.0 (371.3)
T	6426.2 (253)	1108.9 (43.7)	1676.4 (66)	1335.4 (52.6)		822.7 (32.4) 1279.7 (50.4)	2007 (79) 2464 (97)	9430.2 (371.3) 9887.2 (389.3)
V	6883.4 (271)	1108.9 (43.7)	762 (30)	1371.6 (54)	1335.4 (52.6)	822.7 (32.4) 1279.7 (50.4)	2007 (79) 2464 (97)	9887.4 (389.3) 10344.4 (407.3)
W	7112.0 (280)	1108.9 (43.7)	762 (30)	1600.2 (63)	1335.4 (52.6)	822.7 (32.4) 1279.7 (50.4)	2007 (79) 2464 (97)	10116.0 (398.3) 10573.0 (416.3)

DETAIL OF FRAME END

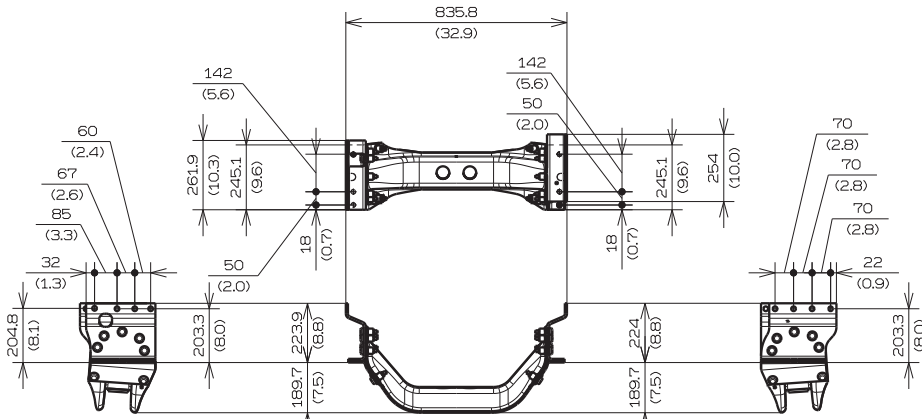


2) DETAIL OF CROSSMEMBER

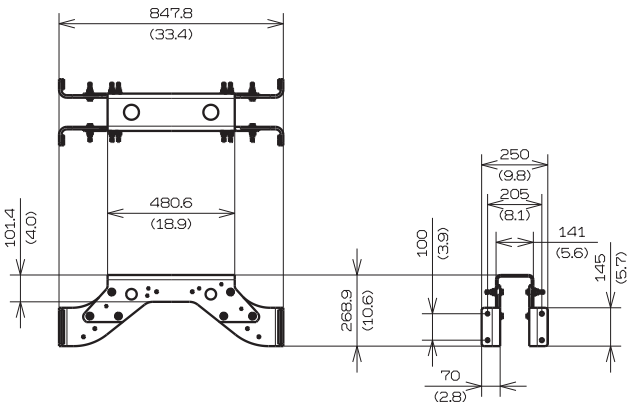
Unit : mm (in.)



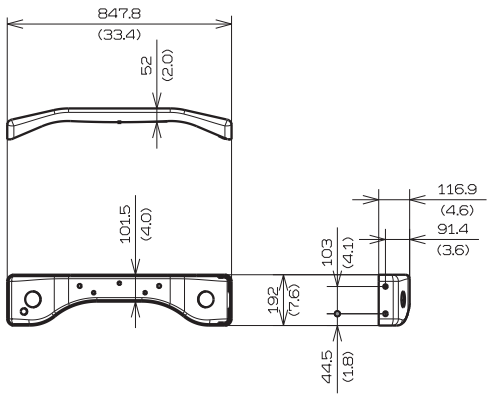
NO.1 CROSSMEMBER



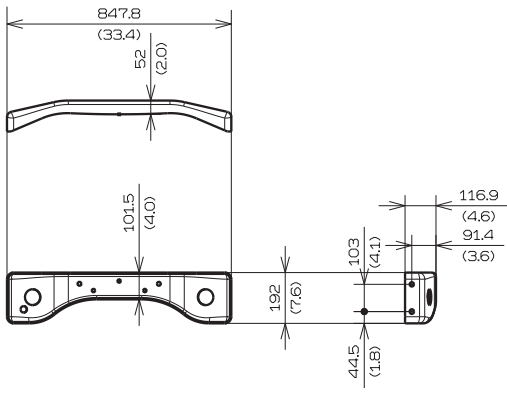
NO.2 CROSSMEMBER



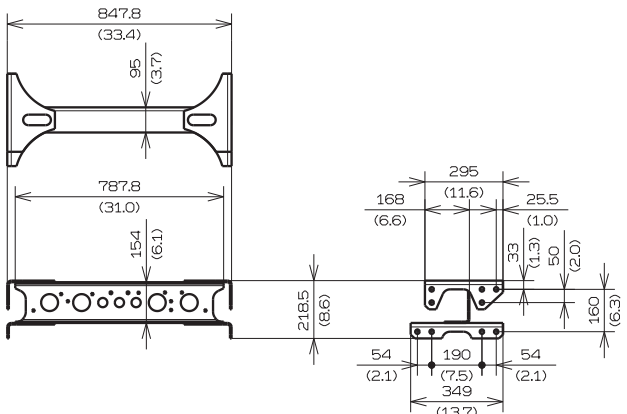
NO.3 CROSSMEMBER



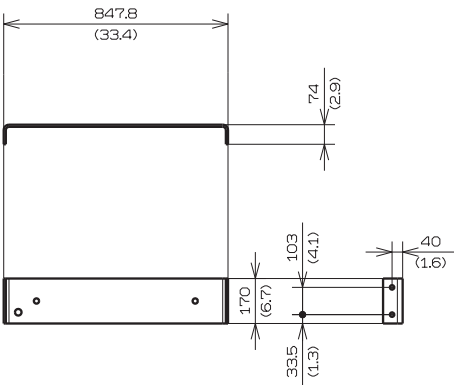
① DOGBORNE STYLE CROSSMEMBER (REINFORCED)



②, ③ DOGBORNE STYLE CROSSMEMBER (NON-REINFORCED)



WELDED STYLE CROSSMEMBER

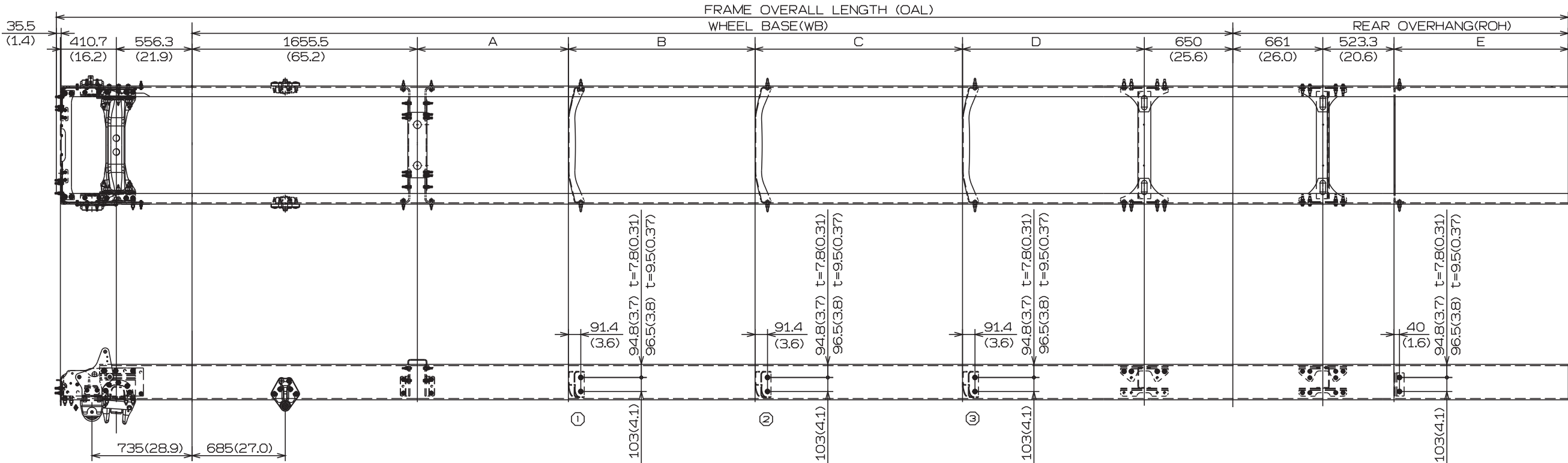


END CROSSMEMBER

CHASSIS MODEL : All models with day cab air suspension

1) DETAIL OF CHASSIS FRAME

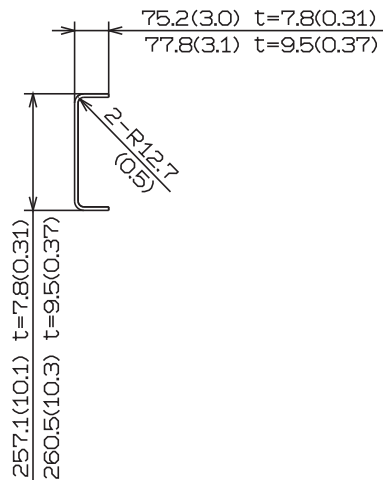
Unit : mm (in.)



DIMENSION OF CHASSIS

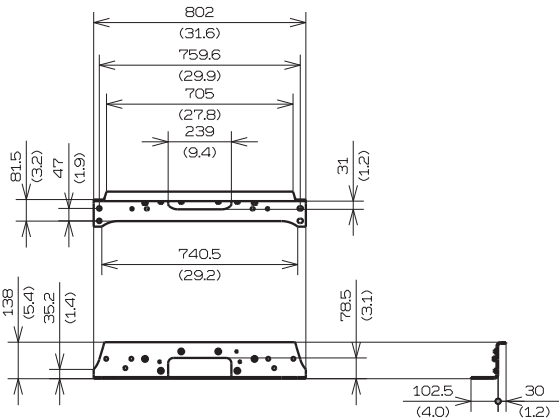
	WB	A	B	C	D	E	ROH	OAL
J	4445.0 (175)	804.1 (31.7)	1335.4 (52.6)			822.7 (32.4) 1279.7 (50.4)	2007 (79) 2464 (97)	7449.0 (293.3) 7906.0 (311.3)
L	4749.8 (187)	1108.9 (43.7)	1335.4 (52.6)			822.7 (32.4) 1279.7 (50.4)	2007 (79) 2464 (97)	7753.8 (305.3) 8210.8 (323.3)
M	5207.0 (205)	804.1 (31.7)	762 (30)	1335.4 (52.6)		822.7 (32.4) 1279.7 (50.4)	2007 (79) 2464 (97)	8211.0 (323.3) 8668.0 (341.3)
P	5511.8 (217)	804.1 (31.7)	1066.8 (42)	1335.4 (52.6)		822.7 (32.4) 1279.7 (50.4)	2007 (79) 2464 (97)	8515.8 (335.3) 8972.8 (353.3)
R	5969.0 (235)	1108.9 (43.7)	1219.2 (48)	1335.4 (52.6)		822.7 (32.4) 1279.7 (50.4)	2007 (79) 2464 (97)	8973.0 (353.3) 9430.0 (371.3)
T	6426.2 (253)	1108.9 (43.7)	1676.4 (66)	1335.4 (52.6)		822.7 (32.4) 1279.7 (50.4)	2007 (79) 2464 (97)	9430.2 (371.3) 9887.2 (389.3)
V	6883.4 (271)	1108.9 (43.7)	762 (30)	1371.6 (54)	1335.4 (52.6)	822.7 (32.4) 1279.7 (50.4)	2007 (79) 2464 (97)	9887.4 (389.3) 10344.4 (407.3)
W	7112.0 (280)	1108.9 (43.7)	762 (30)	1600.2 (63)	1335.4 (52.6)	822.7 (32.4) 1279.7 (50.4)	2007 (79) 2464 (97)	10116.0 (398.3) 10573.0 (416.3)

DETAIL OF FRAME END

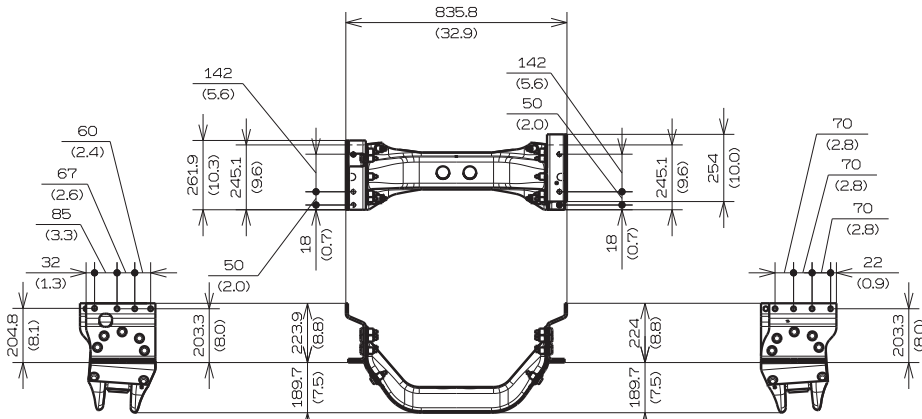


2) DETAIL OF CROSSMEMBER

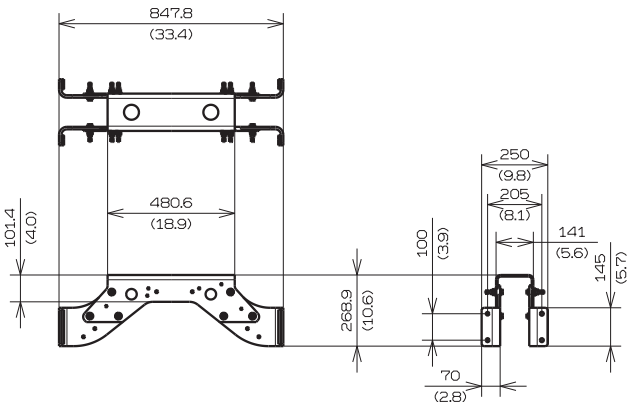
Unit : mm (in.)



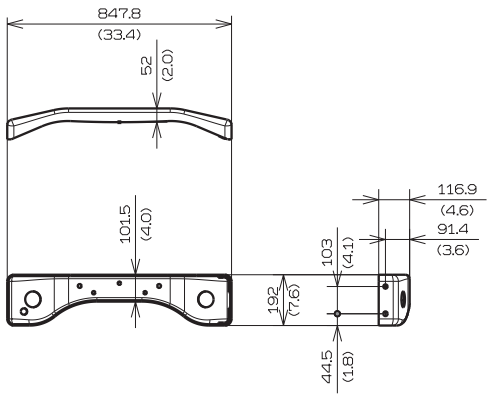
NO.1 CROSSMEMBER



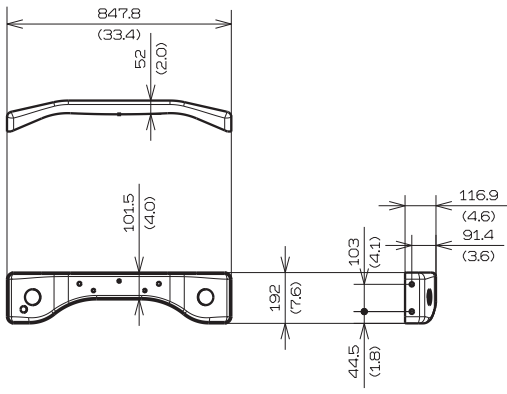
NO.2 CROSSMEMBER



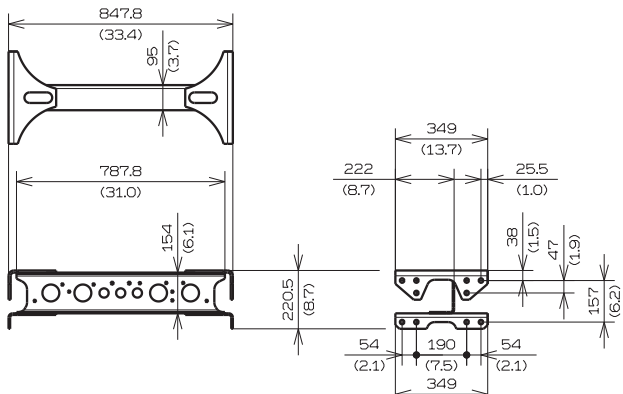
NO.3 CROSSMEMBER



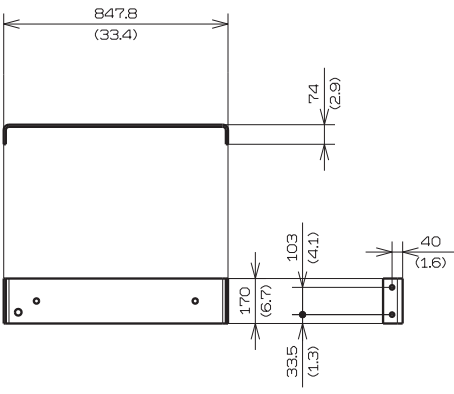
① DOGBORNE STYLE CROSSMEMBER (REINFORCED)



②, ③ DOGBORNE STYLE CROSSMEMBER (NON-REINFORCED)



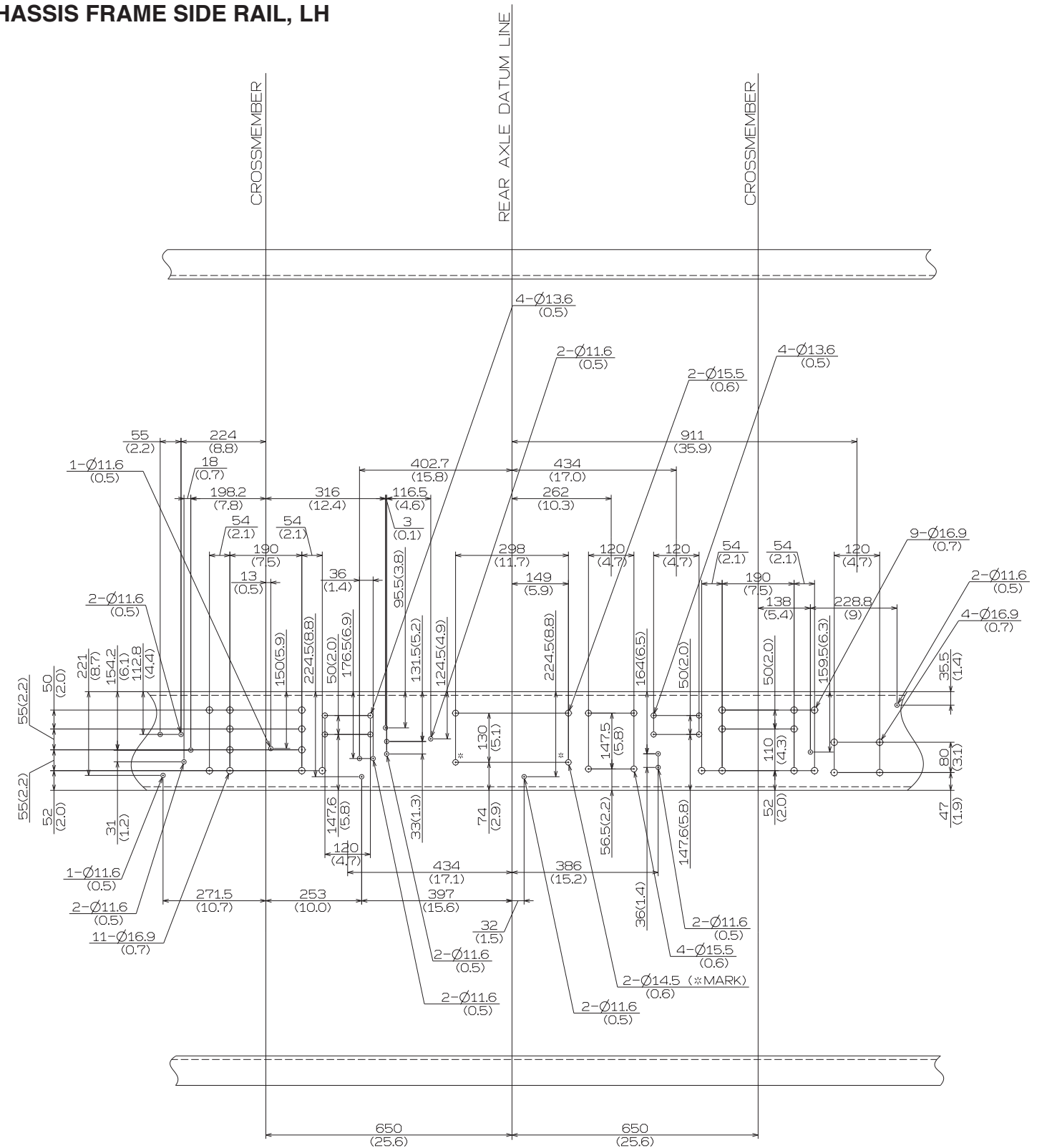
WELDED STYLE CROSSMEMBER



END CROSSMEMBER

Unit : mm (in.)

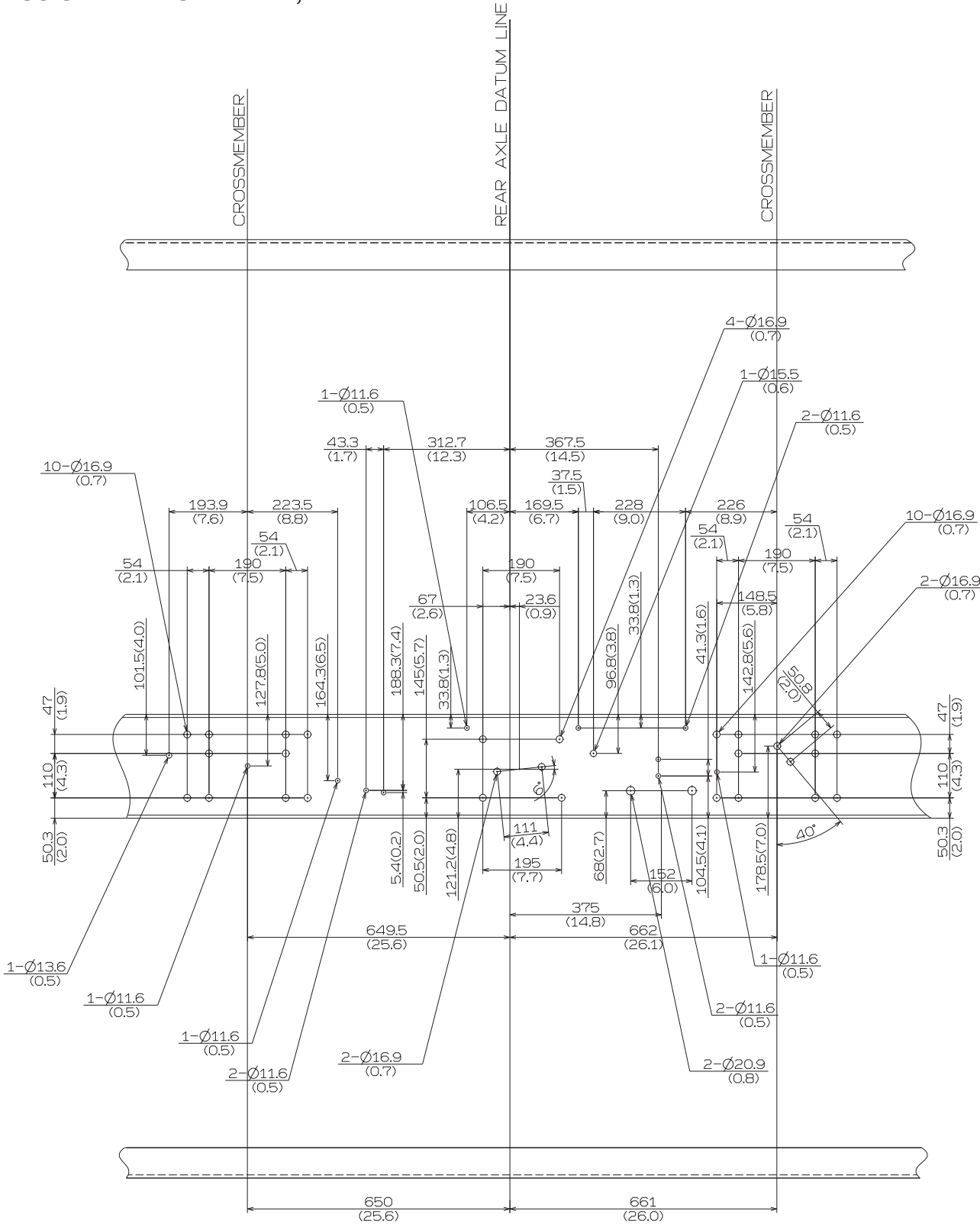
• CHASSIS FRAME SIDE RAIL, LH



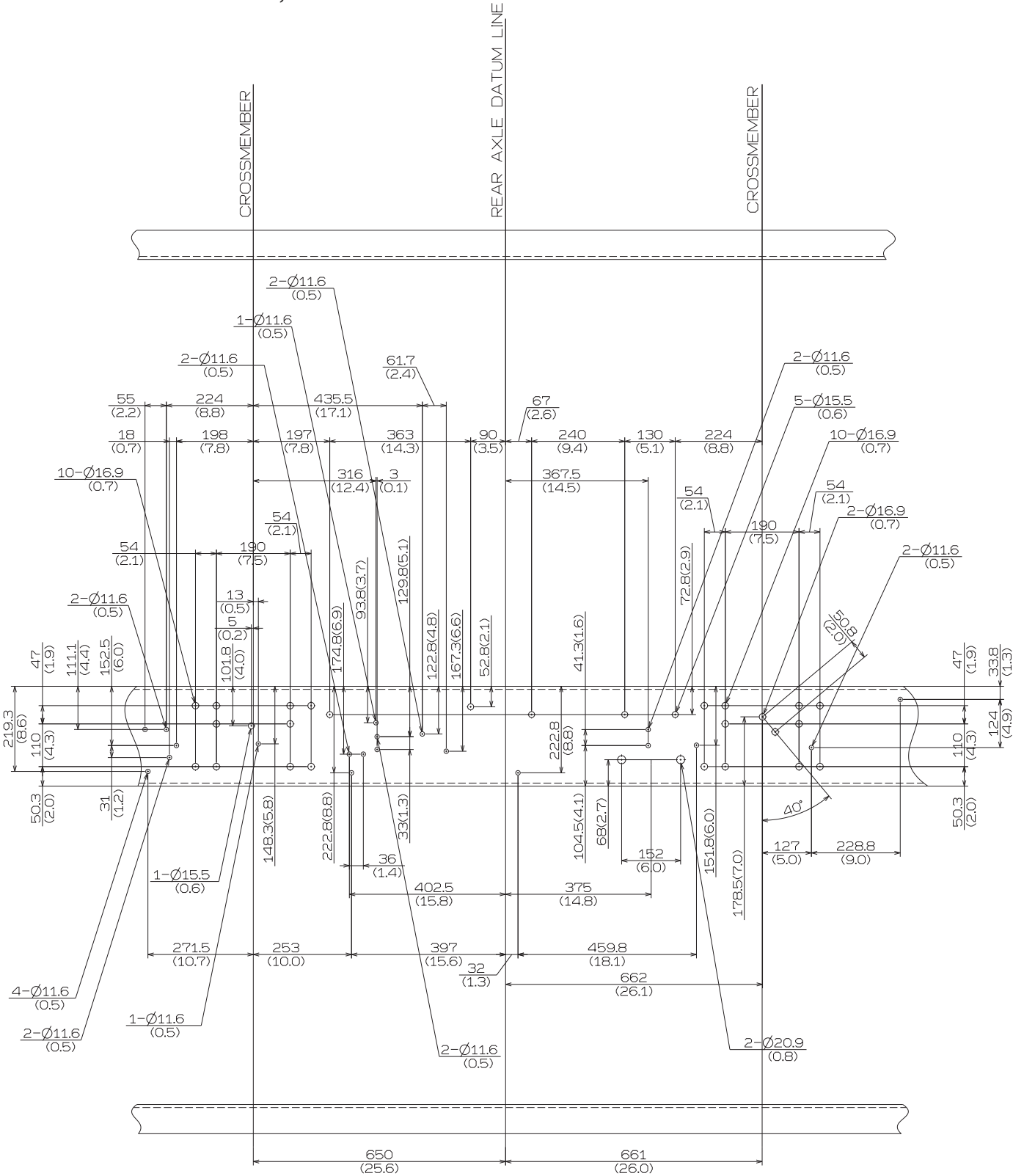
CHASSIS MODEL : NEC1 FOR AIR SUS. WITH HYDRAULIC BRAKE SERIES
{FRAME THICKNESS 7.8 mm (0.31 in.)}

Unit : mm (in.)

• CHASSIS FRAME SIDE RAIL, RH



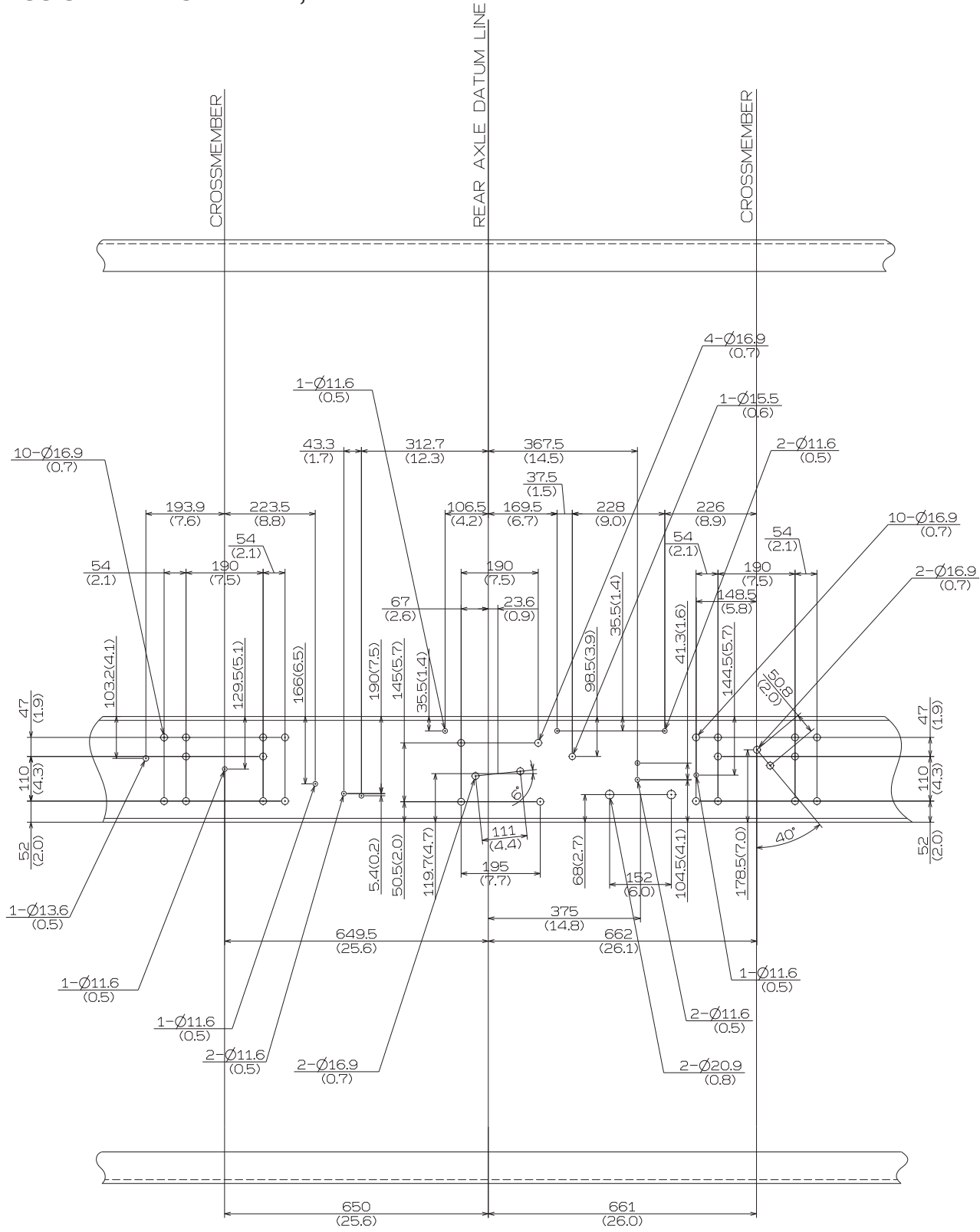
• CHASSIS FRAME SIDE RAIL, LH



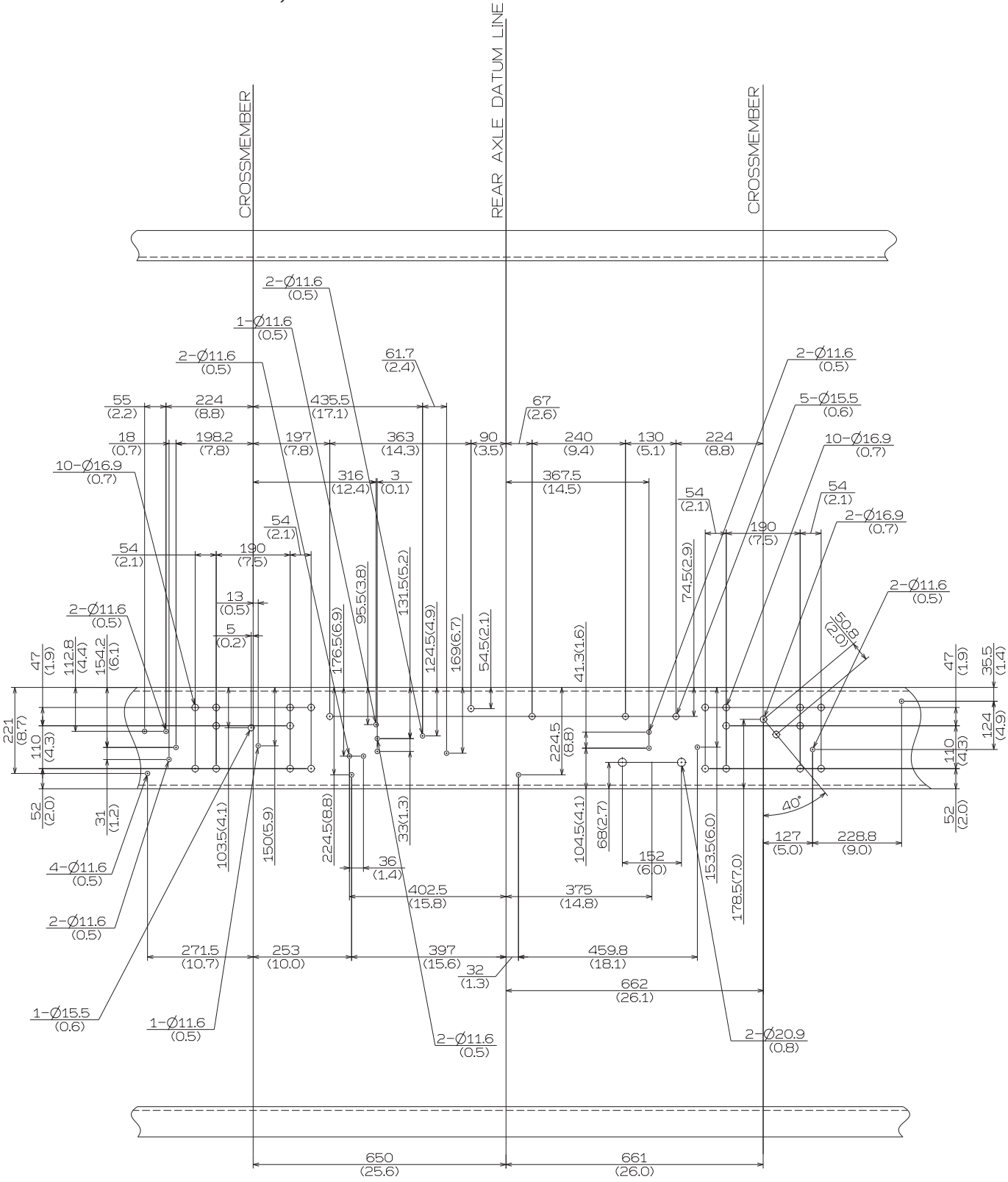
CHASSIS MODEL : NFC1 FOR AIR SUS. WITH HYDRAULIC BRAKE SERIES
{FRAME THICKNESS 9.5 mm (0.37 in.)}

Unit : mm (in.)

• CHASSIS FRAME SIDE RAIL, RH

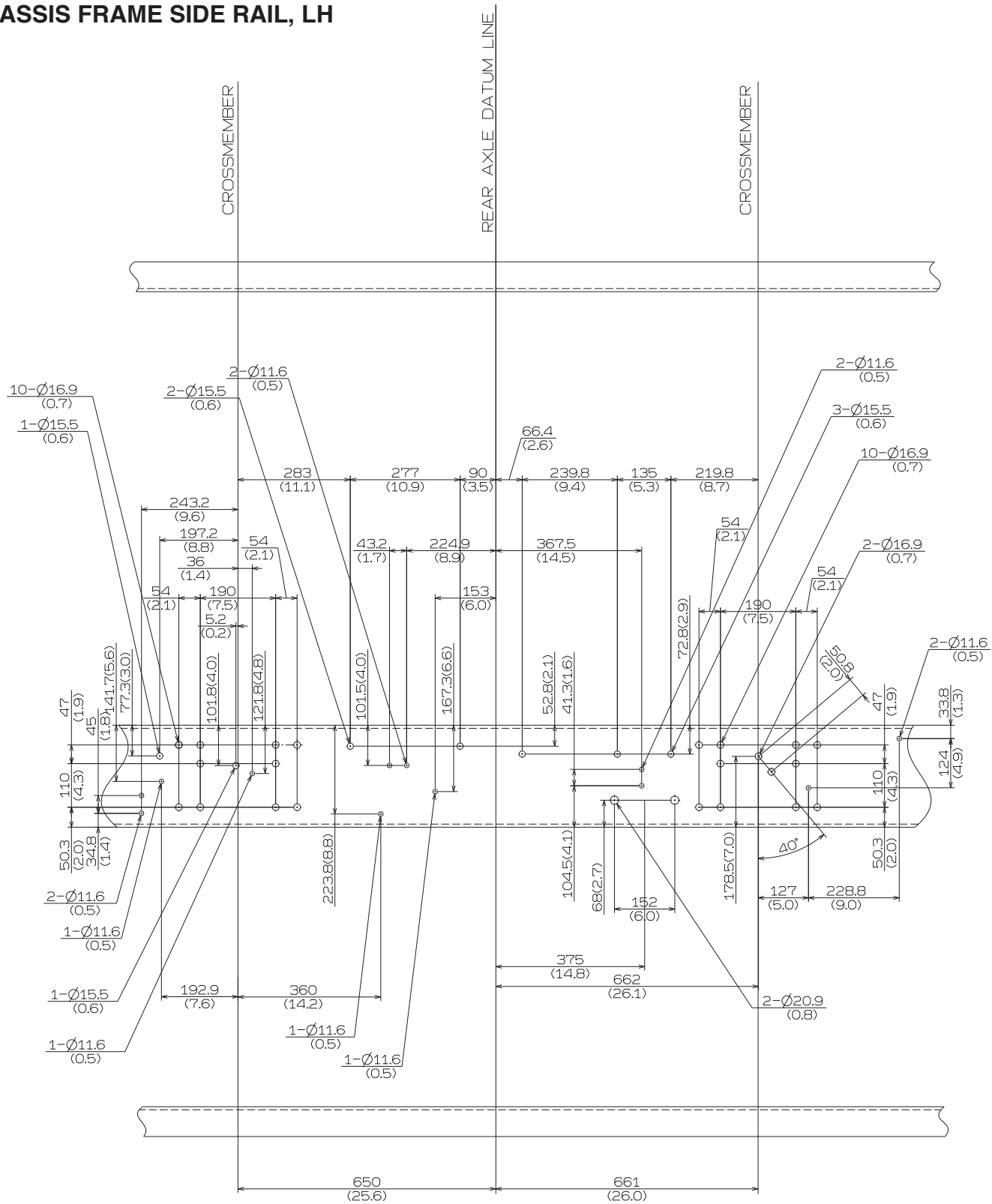


• CHASSIS FRAME SIDE RAIL, LH



Unit : mm (in.)

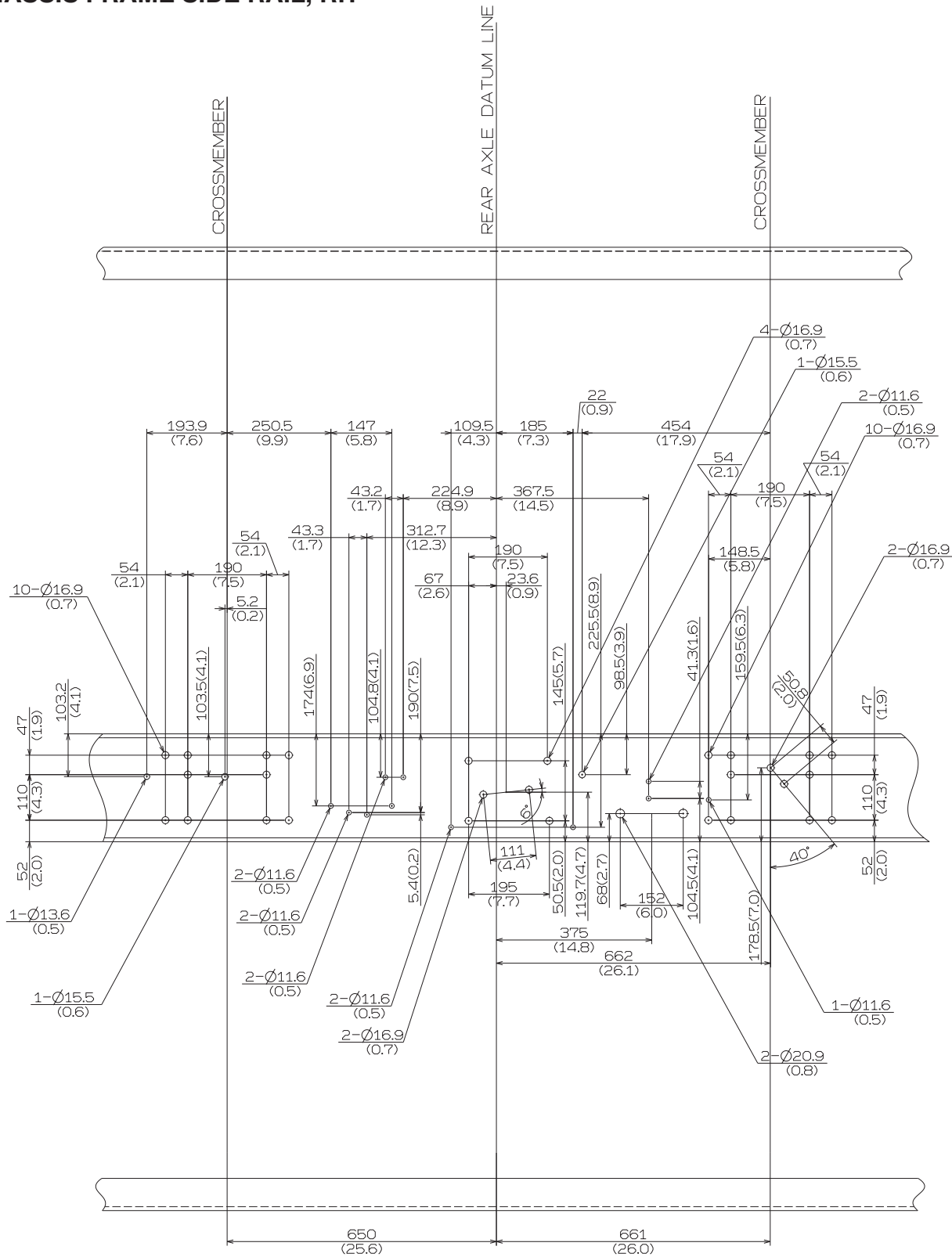
• CHASSIS FRAME SIDE RAIL, LH



CHASSIS MODEL : NVC1 AND NHC1 FOR AIR SUS. WITH FULL AIR BRAKE SERIES
{FRAME THICKNESS 9.5 mm (0.37 in.)}

Unit : mm (in.)

• CHASSIS FRAME SIDE RAIL, RH



• CHASSIS FRAME SIDE RAIL, LH

